

NEXLER NexGreen Geo 110

Filtration and separation geotextile

TECHNICAL DATA

Composition	polyester fibres
Colour	white
Mass per unit area	110 g/m ²
Thickness	0,9 mm
Tensile strength - longitudinal direction - transverse direction	6 (-4) kN/m 6 (-4) kN/m
Elongation at break	≥ 50%
Resistance to static puncture	900 (-500) N
Resistance to dynamic puncture	30 (+10) mm
Water permeability in the direction perpendicular to the surface	110 (±15) l/(m ² ·s) 0,11 (±0,015) m/s
Characteristic pore size	110 (±20) µm
Roll width	2 m
Roll length	100 m

PROPERTIES

- Increased mechanical strength and resistance to damage and punctures achieved by calendering the geotextile
- High filtration capacity even for fine particles due to reduced pore size
- Eliminates leaching
- Increased resistance to UV radiation
- Increased flexibility
- Resistant to the effects of fungi and bacteria



APPLICATION

- Separation and filtering layer in green roof systems preventing drainage membranes from silting up
- Protection of waterproofing and thermal insulation against mechanical damage
 - In green roof systems
 - On ballasted roofs
 - On foundations, retaining structures, culverts and tunnels during excavation backfilling
- Separation and filtration layer in drainage systems to protect the drainage against mechanical damage and siltation
- Separation and filtration layer between structural elements and fractions of different grain size during construction
 - Footpaths, sidewalks, driveways and roads
 - Ground-level terraces
- Erosion protection in combination with geogrids or geonets in slope and embankment construction
- Protective layer in swimming pools and ponds to protect geomembranes and foils from mechanical damage



PACKAGING

Poland

- Roll: 200 m²

Export

- Roll: 200 m²

METHOD OF APPLICATION

CONDITION OF USE

Works should not be carried out during precipitation.

SUBSTRATE PREPARATION

The substrate on which **NexGreen Geo 110** is laid should be even, clean and free of sharp protruding edges which may damage the geotextile layer. The soil and subbase layers must be properly compacted, levelled and care must be taken to ensure that they are free of sharp fractions and organic materials (e.g. sharp stones, branches, glass).

PRODUCT CONTROL

Check the production date on the packaging before use. The product should not be incorporated beyond its shelf life. The geotextile must be uniform along its entire length, without visible mechanical damage and delamination.

PRODUCT PREPARATION

NexGreen Geo 110 is a ready-to-use product. When laying the geotextile over large areas, the geotextile should be cut so that the transverse overlaps are not positioned in a single line.

APPLICATION METHOD

Green roofs and ground reinforcement: When laying **NexGreen Geo 110**, unroll from the roll while tensioning the unrolled layer. The geotextile must be laid out evenly over the prepared surface to ensure maximum contact with the substrate. Lay successive layers in the same direction maintaining a minimum overlap width of 20 cm.

In green roof systems, the geotextile can be used as a protection layer under the drainage membrane or as a filtering layer over the drainage membrane to prevent siltation of the dimples.

Protection of waterproofing of foundations and building structures: Unroll **NexGreen Geo 110** along the vertical edge of the structural element while tensioning the layer being unrolled to ensure laying it out evenly without wrinkles. Connect adjacent sections with an overlap minimum 20 cm wide. Use suitable anchoring elements for fixing, i.e. starter strips, dowels, pins. The anchoring elements must be selected according to the layering in such a way that the continuity of the waterproofing layer is not compromised (penetration) during their fixing.

French drain: Lay **NexGreen Geo 110** in a single strip running along the bottom of the excavation or across using strips cut into suitable lengths. The excavation must have a slope for proper water flow. Select such width (length) of the geotextile that it allows subsequent tight surrounding of aggregate (gravel). Once the drainage pipe installation work has been completed, wrap the aggregate (gravel) with geotextile. Connect the edges of the geotextile mechanically, e.g. with steel pins. Then backfill with fill soil in accordance with the design specifications, ensuring adequate compaction to prevent soil settlement and maintain drainage capacity.

When connecting different sections, start laying **NexGreen Geo 110** from the side where the excavation is at the lowest level. This will allow proper water flow over the overlaps without pulling them upwards.

CONTROL OF PERFORMANCE

When laying **NexGreen Geo 110**, ensure that the geotextile adheres evenly to the substrate, with no visible wrinkles or creases. Check that successive layers have not shifted and check overlap widths.

TOOLS AND TOOL CLEANING

Multi-purpose knife, shears.

STORAGE AND TRANSPORT

Store in dry rooms, in tightly closed original packaging. The product must be protected from direct sunlight. Do not allow the product to become soaked.

NOTES

Works should be carried out in accordance with technical conditions, manufacturer's instructions, health and safety standards and regulations.

After works are finished, hand over the remaining content of the product and the container to authorised companies.

GENERAL RECOMMENDATIONS

Technical data and information on the method of use are given for a temperature of 23°C ± 2°C and a relative air humidity of 55%.

Do not lay the geotextile on a subbase with excessively sharp edges. Protect the geotextile from mechanical damage during further construction work (e.g. aggregate compaction), avoid punctures and tears.

NexGreen Geo 110 should be backfilled with soil/aggregate on the day of installation. Use natural soils that are not strongly acidic or strongly alkaline. During backfilling, care must be taken to ensure that the soil is not spread from too great a height, causing mechanical damage or rolling up of the geotextile.

IMPORTANT INFORMATION

Please refer to the detailed conditions of use of the product before use.

We guarantee the quality of our materials as part of our terms of sale and delivery. For buildings with special requirements that are not covered by this manual, we provide our Customers with our own professional advisory service.

The manufacturer has no influence on the improper use of the material, its use for other purposes or under conditions other than those described above. The guarantee only covers the quality of the delivered product. The correct and therefore effective use of the product is not subject to our control.

Neither the manufacturer nor his authorized representative may be held liable for any loss incurred as a result of improper use or storage of the product.

Employees of the company are authorized to provide technical information only and solely in accordance with this Technical Data Sheet. Information other than that contained in this sheet should be confirmed in writing.

If you have any doubts, consult the manufacturer.

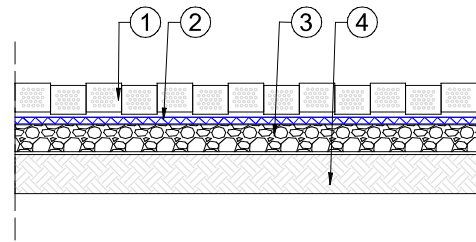
Once we have issued a new Technical Data Sheet, this manual is no longer valid.

CONTACT DETAILS

NEXLER sp. z o.o.
 Łużycka 6, 81-537 Gdynia, Poland
 tel.: +48 58 712 94 44
 www.nexler.com
 e-mail: dt@nexler.com

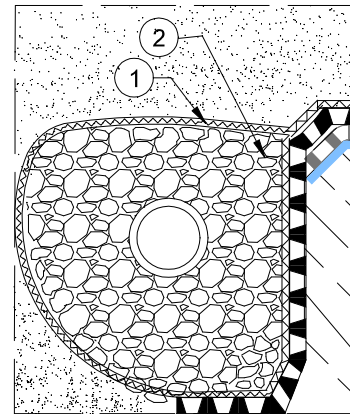
DETAILS

Geogrid for aggregate surfaces



1. NEXLER NexGreen Road 440/75/13 geogrid with filling
2. Separation and diffusion geotextile **NexGreen Geo 110**
3. Aggregate drainage
4. Native soil

Surface drainage



1. NEXLER NexGreen Geo 110 filtration and separation geotextile
2. Mineral filling