



NEXLER Sealing Tape 120/120

Particularly suitable for outdoor use

TECHNICAL DATA

Composition	two layers of non-woven polyester with a core of thermoplastic elastomer TPE
Total width	120 mm
Width of the coated part	120 mm
Total thickness	0,42 - 0,78 mm
Mass per unit area of the coated part	≥ 340 g/m ²
Tensile properties: - maximum tensile stress - relative elongation at maximum tensile stress	≥ 3,4 Mpa ≥ 170%
Watertightness at a pressure of 0,15 MPa for 24 h	no leaks
Fatigue resistance - in a system with a waterproofing coating, intended for use, i.a. in balconies and terraces	no cracks in the coating and tape near the test slit and no other damage reducing the tightness
Consumption	depending on the needs
Reference document(s)	ITB-KOT-2019/0876 issue 3 + annex 1

PROPERTIES

- Flexible across the full width
- Stretchable transversely and rigid longitudinally
- Effectively protects against water penetration
- Resistant to medium and heavy loads of non-pressurised water and water at constant pressure
- Ensures a durable joint
- Increased resistance to ageing and chemicals



APPLICATION

- Reinforcement of waterproofing inside and outside of buildings, e.g. on terraces, balconies, in swimming pools and bathrooms
- Performing local sealing in under-tile waterproofing systems
- Reinforcement of flexible insulation at corners, edges, expansion joints, pipe penetrations, etc.
- Bonding of deformable and non-deformable surfaces at wall-to-wall, wall-to-floor joints
- For use in combination with: PMBC compounds, single-component liquid foils, two-component sealing mortars



PACKAGING

Poland

- Tape:
 - roll 10 rm
 - roll 50 rm
- Internal and external corners:
 - 25 pcs. per pack
- Wall and floor cuffs:
 - 25 pcs. per pack

Export

- Tape:
 - roll 10 rm
 - roll 50 rm
- Internal and external corners:
 - 25 pcs. per pack
- Wall and floor cuffs:
 - 25 pcs. per pack

METHOD OF USE

▪ SUBSTRATE PREPARATION

Prepare the substrate as recommended in the technical data sheets of the products used for inserting tapes.

▪ PRODUCT CONTROL

When laying **Sealing Tape 120/120**, check that the tape maintains a uniform width throughout. The tape must be uniform along its entire length, without visible mechanical damage or delamination.

▪ PRODUCT PREPARATION

Sealing Tape 120/120 is a ready-to-use product. Before laying the **Sealing Tape 120/120**, the depth of the joint and the section along which the joint is to be used should be measured. Cut the tape in such a way as to reduce the number of places where different fragments connect in one line.

▪ APPLICATION

Sealing Tape 120/120 is applied to the fresh sealing material, pressed down and covered with the same material. The same is done with internal and external corners and wall and floor cuffs. For expansion joints, the tape should be pressed into the joint and a cavity in a shape of Ω should be formed, providing room for deformation. It is then also not advisable to cover the entire width of the tape with a sealing material, as this would impair its stretchability.

▪ CONTROL OF PERFORMANCE

When embedding **Sealing Tape 120/120**, care must be taken to ensure that the tape adheres evenly to the substrate previously covered with the sealing material, without wrinkles, creases or visible air bubbles.

TOOLS AND TOOL CLEANING

Line gauge, measuring tape, scissors, putty knife.

Clean tools with agents intended for cleaning tools of the material the tape is embedded into.

STORAGE AND TRANSPORT

Store in dry and cool rooms. The product must be protected from direct sunlight.

NOTES

Works should be carried out in accordance with technical conditions, manufacturer's instructions, health and safety standards and regulations.

GENERAL RECOMMENDATIONS

The **Sealing Tape 120/120** should not be subject to prolonged sunlight exposure. UV radiation accelerates the ageing process.

Individual batches of the product may vary slightly in the shade of the colour of fabric or print.

IMPORTANT INFORMATION

Please refer to the detailed conditions of use of the product before use.

We guarantee the quality of our materials as part of our terms of sale and delivery.

For buildings with special requirements that are not covered by this manual, we provide our Customers with our own professional advisory service.

The manufacturer has no influence on the improper use of the material, its use for other purposes or under conditions other than those described above. The guarantee only covers the quality of the delivered product. The correct and therefore effective use of the product is not subject to our control.

Neither the manufacturer nor his authorized representative may be held liable for any loss incurred as a result of improper use or storage of the product.

Employees of the company are authorized to provide technical information only and solely in accordance with this technical data sheet. Information other than that contained in this sheet should be confirmed in writing.

If you have any doubts, consult the manufacturer.

Once we have issued a new Technical Data Sheet, this manual is no longer valid.

CONTACT DETAILS

NEXLER sp. z o.o.

Łużycka 6, 81-537 Gdynia, Poland

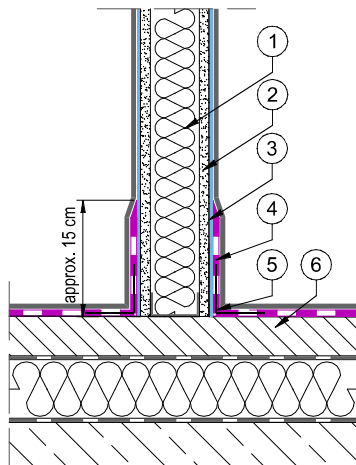
tel.: +48 58 712 94 44

www.nexler.com

e-mail: dt@nexler.com

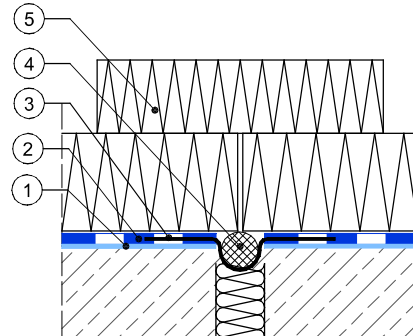
DETAILS

Detail of floor insulation



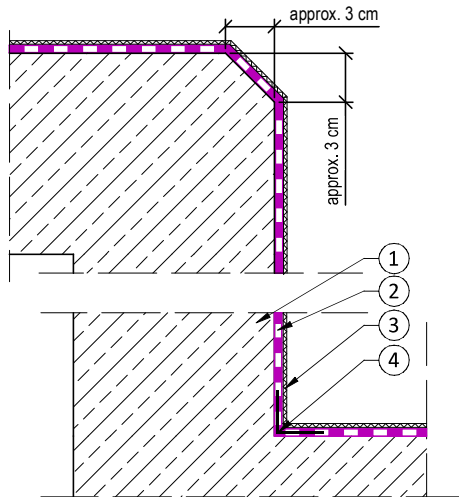
1. Mineral wool
2. Gypsum plaster board
3. Primer NEXLER Gruntofol
4. Waterproof insulation NEXLER AQUAMINERAL 1K Ultra
5. **NEXLER Sealing Tape 120/120**
6. Floor slab

Expansion joint detail - waterproofing insulation



1. Priming layer of NEXLER BITFLEX Primer
2. Waterproofing NEXLER BITFLEX 2KP
3. **NEXLER Sealing Tape 120/120**
4. NEXLER Backery Rod
5. Polystyrene boards EPS or XPS

Detail of waterproofing finish in vertical corners



1. Construction wall
2. Waterproof insulation NEXLER AQUAMINERAL 1K Ultra
3. Protective non-woven material
4. **NEXLER Sealing Tape 120/120**