



NEXLER Backer Rod

Polyethylene foam backer rod for filling joints

TECHNICAL DATA

Ingredients	foamed polyethylene
Absorbency	non-absorbent
Chemical resistance to	cement, gypsum, lime, concrete, resinous and bituminous compounds, diluted acids, aqueous alkaline solutions, non-aromatic solvents, alcohols, gasolines
Resistance to temperature	from -40°C to +95°C
Available diameters	Φ 6 mm, Φ 8 mm, Φ 10 mm, Φ 15 mm, Φ 20 mm, Φ 25 mm
Diameters available upon request	Φ 30 mm, Φ 40 mm, Φ 50 mm, Φ 60 mm, Φ 70 mm
Colour	grey

PROPERTIES

- Flexible
- Non-absorbent
- Ensures proper expansion joint function
- Increased resistance to ageing



HIGH TRANSVERSAL FLEXIBILITY



NON-ABSORBENT

APPLICATION

- Filling of expansion gaps to achieve the correct expansion joint cross-sections
- For use on vertical and horizontal surfaces
- For indoor and outdoor use



VERTICAL HORIZONTAL



FOR INDOOR AND OUTDOOR USE

PACKAGING

Poland

- Rolls:
 - 50 rm - Φ 6 mm, Φ 8 mm, Φ 10 mm, Φ 15 mm, Φ 20 mm, Φ 25 mm, Φ 50 mm, Φ 60 mm, Φ 70 mm
 - 100 rm - Φ 40 mm
 - 250 rm - Φ 30 mm

Export

- Rolls:
 - 50 rm - Φ 6 mm, Φ 8 mm, Φ 10 mm, Φ 15 mm, Φ 20 mm, Φ 25 mm, Φ 50 mm, Φ 60 mm, Φ 70 mm
 - 100 rm - Φ 40 mm
 - 250 rm - Φ 30 mm

METHOD OF USE

SUBSTRATE PREPARATION

The gap into which the **Backer Rod** is inserted must be properly dried and cleaned of any debris that reduce the adhesion of the filling material.

PRODUCT CONTROL

When laying the **Backer Rod**, check that the rod maintains a uniform width throughout the whole length. If the rod is thinned, remove the thinned section and continue the work by attaching another section of the correct width. The rod must be uniform over the entire length of the joint to be filled.

PRODUCT PREPARATION

The **Backer Rod** is a ready-to-use product. Before laying the rod, the depth of the joint and the section along which the joint is to be used should be measured.

APPLICATION

Insert the **Backer Rod** into the expansion gap by pressing it inwards to the adequate depth to obtain the correct cross-section of the filling material. It is recommended that the depth of the fill is not greater than its width, unless the manufacturer of the filling compound recommends otherwise. In order to achieve the correct filling, the **Backer Rod** must have a diameter approx. 20% larger than the joint width. Do not use sharp tools that may cause damage to the rod surface during application.

CONTROL OF PERFORMANCE

When laying the **Backer Rod**, care must be taken to ensure that it is laid evenly in the joint at a uniform depth. The next rod should be joined to the previous one with a butt joint.

STORAGE AND TRANSPORT

Store and transport in dry conditions.

NOTES

Works should be carried out in accordance with technical conditions, manufacturer's instructions, health and safety standards and regulations.

GENERAL RECOMMENDATIONS

Technical data are given for a temperature of $23^{\circ}\text{C} \pm 2^{\circ}\text{C}$.

The consumption of the product given in this sheet depends on the preparation of the substrate.

The **Backer Rod** should not be subject to prolonged sunlight exposure. UV radiation accelerates the ageing process.

IMPORTANT INFORMATION

Please refer to the detailed conditions of use of the product before use. We guarantee the quality of our materials as part of our terms of sale and delivery.

For buildings with special requirements that are not covered by this manual, we provide our Customers with our own professional advisory service.

The manufacturer has no influence on the improper use of the material, its use for other purposes or under conditions other than those described above. The guarantee only covers the quality of the delivered product. The correct and therefore effective use of the product is not subject to our control.

Neither the manufacturer nor his authorized representative may be held liable for any loss incurred as a result of improper use or storage of the product.

Employees of the company are authorized to provide technical information only and solely in accordance with this technical data sheet. Information other than that contained in this sheet should be confirmed in writing.

If you have any doubts, consult the manufacturer.

Once we have issued a new technical data sheet, this manual is no longer valid.

CONTACT DETAILS

NEXLER sp. z o.o.

Łużycka 6, 81-537 Gdynia, Poland

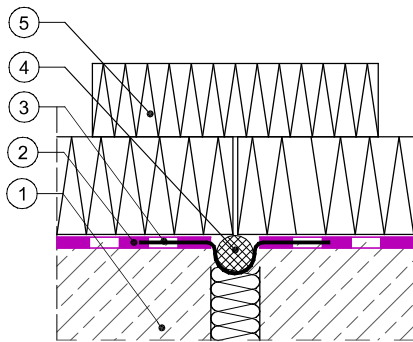
tel.: +48 58 712 94 44

www.nexler.com

e-mail: dt@nexler.com

DETAILS

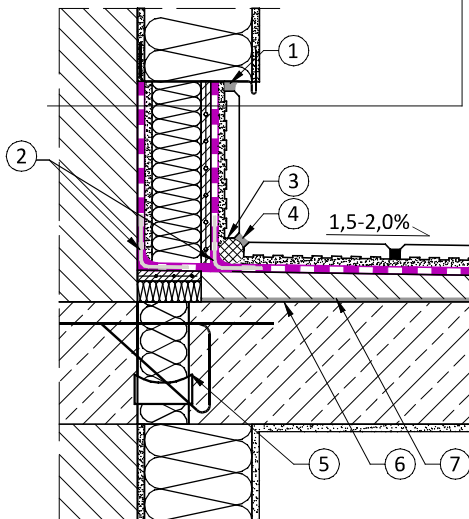
Detail of an expansion



1. Concrete substrate
2. Waterproofing - NEXLER AQUAMINERAL 2K Ultra
3. NEXLER Sealing Tape 120/120
4. **NEXLER Backer Rod**
5. Thermal insulation

Detail of the plinth

construction wall - mineral substrate
waterproofing - NEXLER AQUAMINERAL 2K
thermal insulation - XPS or EPS boards bonded with NEXLER STYROPUK Facade
adhesive mortar with mesh
waterproofing - NEXLER AQUAMINERAL 2K
adhesive mortar class C2-S1
non-absorbent, frost resistant ceramic tiles with CG2 WA flexible grout



1. NEXLER Full Fix
2. NEXLER Sealing Tape 120/120
3. **NEXLER Backer Rod**
4. NEXLER Full Fix
5. Thermal insulation balcony connector
6. Bonding layer – NEXLER RENOBUD R 102
7. Sloping layer – NEXLER RENOBUD R 103 / R 105