



NEXLER Bitumen Roofing Sealant

Single-component roofing sealant

TECHNICAL DATA

Composition	insulation asphalts, dearomatised solvent, fibres, additives																							
Colour	black																							
Consistency	plastic paste																							
Density	1,4 ± 0,1 g/cm ³																							
Drying time	approx. 1 mm/day																							
Flowability at temperature (60 ± 2)°C and inclination of 45° after 5 h - mass on roofing felt	unacceptable mass flow																							
Flexibility when bending on a roller with a diameter of 30 mm at temperature -5°C	no scratches or cracks																							
Pensky-Martens flash point	no less than 40°C																							
Water content	no more than 0,5% (m/m)																							
Penetration (23°C)	min. 190 [0,1 mm]																							
Drainage on an aluminium sheet at a temperature of 70°C, at a 90° angle, in 5h	not more than 5 mm																							
Adhesion to concrete: - at a temperature of +23°C, at an elongation of 30 mm - at a temperature of -20°C, at an elongation of 15 mm	does not detach from the substrate does not detach from the substrate																							
Formation of shrinkage cracks after 30 days at a temp. of 23°C	no cracks and no detachment from the substrate																							
Thermal resistance after curing	from -20°C to +80°C																							
Consumption when regluing	0,8 - 1,2 kg/m ²																							
Consumption when filling gaps																								
<table border="1"> <thead> <tr> <th colspan="2">Gap dimension</th> <th rowspan="2">A 300 ml cartridge is sufficient for approx. [rm]</th> </tr> <tr> <th>Width [mm]</th> <th>Depth [mm]</th> </tr> </thead> <tbody> <tr> <td>5</td> <td>5</td> <td>12,0</td> </tr> <tr> <td>6</td> <td>6</td> <td>8,3</td> </tr> <tr> <td>8</td> <td>8</td> <td>4,7</td> </tr> <tr> <td>10</td> <td>8</td> <td>3,8</td> </tr> <tr> <td>12</td> <td>8</td> <td>3,1</td> </tr> <tr> <td>15</td> <td>8</td> <td>2,5</td> </tr> </tbody> </table>		Gap dimension		A 300 ml cartridge is sufficient for approx. [rm]	Width [mm]	Depth [mm]	5	5	12,0	6	6	8,3	8	8	4,7	10	8	3,8	12	8	3,1	15	8	2,5
Gap dimension		A 300 ml cartridge is sufficient for approx. [rm]																						
Width [mm]	Depth [mm]																							
5	5	12,0																						
6	6	8,3																						
8	8	4,7																						
10	8	3,8																						
12	8	3,1																						
15	8	2,5																						
Substrate and ambient temperature during application and binding	from +5°C to +40°C																							
Reference document(s)	PN-B-24620:1998; PN-B-24620:1998/Az1:2004																							

PROPERTIES

- Permanently flexible
- Waterproof
- Resistant to weather conditions and ageing
- Safe in contact with polystyrene foam
- Very good adhesion to bitumen and mineral substrates (dry and wet)



SAFE IN CONTACT WITH POLYSTYRENE FOAM



RESISTANT TO WEATHER CONDITIONS



PERMANENTLY FLEXIBLE

APPLICATION

- Sealing of coverings made of bituminous felt, shingles, sheet metal, roofing tiles
- Sealing of gaps around flashings, chimneys, eaves, wind braces, drains, skylights, roofing felt coverings
- Filling of cavities in bituminous felt coverings
- Carrying out roofing repairs (removing blisters, sealing cracks and seams in bituminous felt)



FOR ROOFS



CARTRIDGE

PACKAGING

Poland

- Packaging:
- cartridge 300 ml
- Quantity per box:
- 300 ml - 12 pcs.

Export

- Packaging:
- cartridge 300 ml
- Quantity per box:
- 300 ml - 12 pcs.

METHOD OF USE

CONDITIONS OF USE

The temperature of the substrate and air during the works should be from +5°C to +40°C. Works should not be carried out during precipitation and strong sunlight.

SUBSTRATE PREPARATION

The surface must be properly prepared before applying **Bitumen Roofing Sealant**. The substrate should be clean, degreased, free of rust and loosely bound residues of old sealants, coatings, etc. A mineral substrate should first be primed with NEXLER Penetrator G7 or NEXLER BITFLEX Primer.

PRODUCT CONTROL

Check the production date on the packaging before use. Do not use the product beyond its shelf life. The product should have a homogeneous consistency.

PRODUCT PREPARATION

Bitumen Roofing Sealant is a ready-to-use product. If stored at low temperatures, the product should be placed in a warm room for a minimum of 24 hours before use.

APPLICATION

Apply **Bitumen Roofing Sealant** with a squeezer. Pay particular attention to the method of filling the gap. The sealant must continuously adhere to the substrate in the area to be sealed. When gluing or regluing, apply the sealant on one side over the entire surface of the element to be bonded. Wait 15 - 20 minutes, join and press the glued elements down. Cut the existing blisters crosswise, glue underneath and then brush over with the adhesive on top.

CONTROL OF PERFORMANCE

After **Bitumen Roofing Sealant** is cured, it is recommended to check its adhesion to the substrate. To ensure proper seal, the product must not detach from the sealed surface.

TOOLS AND TOOL CLEANING

Squeezer.

Clean the tools with petroleum solvents after finishing the works.

Once cured, the product can only be removed mechanically.

STORAGE AND TRANSPORT

The shelf life of the product is 12 months from production date indicated on the packaging. Store in rooms with a temperature of +5°C to +25°C in tightly sealed, original packaging. Protect from moisture.

NOTES

Works should be carried out in accordance with technical conditions, manufacturer's instructions, health and safety standards and regulations. For information on how to deal with symptoms of disease, allergies or irritation of the skin or eyes, please refer to the Safety Data Sheet (www.nexler.com).

After works are finished, hand over the remaining content of the product and the container to authorised companies.

GENERAL RECOMMENDATIONS

Technical data and information on the method of use are given for a temperature of 23°C ± 2°C and a relative air humidity of 55%. In other conditions, the setting (drying) time may change significantly.

Do not use for tar materials. Do not use the product inside rooms intended for the food industry and for permanent human occupancy.

SAFETY INFORMATION

Flammable liquid and vapour. Keep out of reach of children. Keep away from heat, hot surfaces, sparks, open flames and other ignition sources. No smoking. Store in a well-ventilated place. Keep cool. Dispose of contents/container according to the instructions of the manufacturer or person authorized to dispose of waste.

IMPORTANT INFORMATION

Please refer to the detailed conditions of use of the product before use.

We guarantee the quality of our materials as part of our terms of sale and delivery. For buildings with special requirements that are not covered by this manual, we provide our Customers with our own professional advisory service.

The manufacturer has no influence on the improper use of the material, its use for other purposes or under conditions other than those described above. The guarantee only covers the quality of the delivered product. The correct and therefore effective use of the product is not subject to our control.

Neither the manufacturer nor his authorized representative may be held liable for any loss incurred as a result of improper use or storage of the product.

Employees of the company are authorized to provide technical information only and solely in accordance with this technical data sheet. Information other than that contained in this sheet should be confirmed in writing.

If you have any doubts, consult the manufacturer.

Once we have issued a new technical data sheet, this manual is no longer valid.

CONTACT DETAILS

NEXLER sp. z o.o.

Łużycka 6, 81-537 Gdynia, Poland

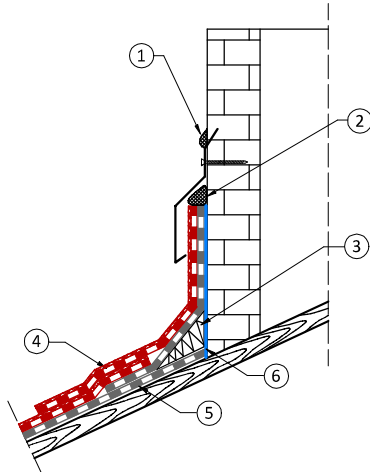
tel.: +48 58 712 94 44

www.nexler.com

e-mail: dt@nexler.com

DETAILS

Detail of a masonry chimney seal



1. NEXLER Bitumen Roofing Sealant
2. Sealing with NEXLER Arbolex Aqua Stop or bitumen compound melting of min. 0,5 cm
3. Polystyrene wedge
4. Weldable top layer bituminous felt
5. Self-adhesive or weldable underlayer bituminous felt with mechanical fixing to the substrate
6. Bituminous primer, e.g. NEXLER BITFLER Primer