



NEXLER Gruntofol

Deeply penetrating primer

TECHNICAL DATA

Density in a 20°C temperature	1,0 ± 0,05 g/cm ³
Drying time of a layer	approx. 1 h
The number of layers	1 - 2
The temperature of the substrate and air during the work	from +5°C to +30°C
Consumption	0,2 - 0,25 kg/m ²

PROPERTIES

- Quick-drying
- Solvent-free
- Penetrates deeply into pores causing their initial hydrophobisation
- Reinforces the substrate
- Increases adhesion of mineral-polymer coatings to the substrate
- Reduces surface dusting
- Hygienically certified for indoor and outdoor use



APPLICATION

- Priming absorbent and porous substrates for using mineral-polymer products
- Priming various types of substrates such as: concrete, cellular concrete, cement plaster, cement-lime plaster, plasterboard, wood, wood-based panels



PACKAGING

Poland

- Packaging: 5 kg
- Quantity per pallet:
- 5 kg - 120 pcs.

Export

- Packaging: 2 kg, 5 kg
- Quantity per pallet:
- 2 kg - 220 pcs.
- 5 kg - 120 pcs.

METHOD OF APPLICATION

▪ CONDITIONS OF USE

The temperature of the substrate and air during the works should be from +5°C to +30°C.

▪ SUBSTRATE PREPARATION

Substrates intended for use of the product: concrete, cellular concrete, cement plaster, cement-lime plaster, plasterboard, wood, wood-based panels and other absorbent substrates.

The substrate intended for product application should be bonded, dry, seasoned and load-bearing. The substrates should be cleaned mechanically, dust, any loose layers and impurities that worsen adhesion should be removed, sharp protruding edges should also be removed. Any defects and irregularities in the mineral substrate should be filled in with a suitable mortar.

▪ PRODUCT PREPARATION

NEXLER Gruntfol is a ready-to-use product. The product should be thoroughly mixed in the container before use.

▪ APPLICATION METHOD

The product is applied to the substrate with a brush or a paint roller. Apply one coat to the substrate. For particularly absorbent substrates, it is recommended to carry out the priming operation twice, with the first coat being done with the product diluted with water in a 1 : 1 ratio. Once the primer has dried, the actual waterproofing layer is applied to the substrate thus prepared.

▪ CONTROL OF PERFORMANCE

After it has dried, a properly made coating should be clean, without flakes and other defects. The coating should adhere closely to the substrate.

TOOLS AND TOOL CLEANING

Brush, roller.

Wash the tool with water during the work and after each use.

STORAGE AND TRANSPORT

The shelf life of the product is 12 months from production date. Store in dry and cool rooms (at temp. above +5°C) in tightly sealed, original packaging. The product is not sensitive to negative temperatures.

NOTES

Works should be carried out in accordance with technical conditions, manufacturer's instructions, health and safety standards and regulations.

For information on how to deal with symptoms of disease, allergies or irritation of the skin or eyes, please refer to the Safety Data Sheet (www.nexler.com).

The remaining content of the product and container should be handed over to authorized companies.

GENERAL RECOMMENDATIONS

Technical data and information on the method of use are given for a temperature of 23°C ± 2°C and a relative air humidity of 55%. In other conditions, the setting (drying) time may change significantly.

The consumption of the product given in this sheet depends on the preparation of the substrate.

SAFETY INFORMATION

Keep out of reach of children. Wash face, hands and exposed parts of the body thoroughly after handling. Wear protective gloves/protective clothing/eye protection/face protection. Dispose of contents/container according to the instructions of the manufacturer or person authorized to dispose of waste.

IMPORTANT INFORMATION

Please refer to the detailed conditions of use of the product before use. We guarantee the quality of our materials as part of our terms of sale and delivery. For buildings with special requirements that are not covered by this manual, we provide our Customers with our own professional advisory service.

The manufacturer has no influence on the improper use of the material, its use for other purposes or under conditions other than those described above. The guarantee only covers the quality of the delivered product. The correct and therefore effective use of the product is not subject to our control.

Neither the manufacturer nor his authorized representative may be held liable for any loss incurred as a result of improper use or storage of the product.

Employees of the company are authorized to provide technical information only and solely in accordance with this technical data sheet. Information other than that contained in this sheet should be confirmed in writing.

If you have any doubts, consult the manufacturer.

Once we have issued a new technical data sheet, this manual is no longer valid.

CONTACT DETAILS

NEXLER sp. z o.o.

Łużycka 2, 81-537 Gdynia, Poland

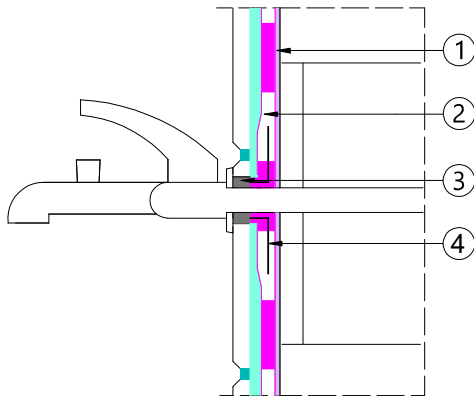
tel.: +48 58 712 94 44

www.nexler.com

e-mail: dt@nexler.com

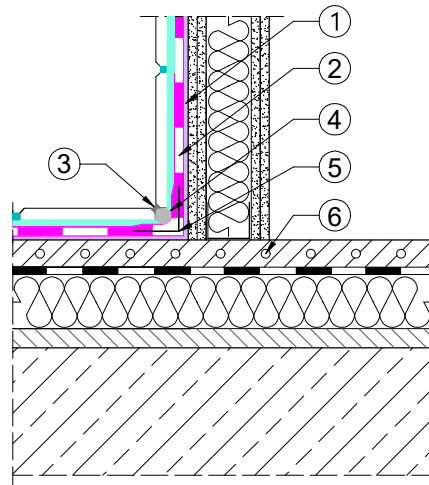
DETAILS

Detail of pipe passage through wall.



1. NEXLER Gruntofol primer
2. Liquid sealing film for under tiles NEXLER Izofol
3. Sealant
4. Sealing sleeve

Detail of heated floor – plasterboard connection



1. NEXLER Gruntofol primer
2. Liquid sealing film for under tiles NEXLER Izofol
3. Sealant
4. Expansion cord
5. Sealing tape
6. Floor heating