



# NEXLER SBS GR

## Modified asphalt-resin SBS solution

### TECHNICAL DATA

|   |   |
|---|---|
| <b>Ingredients</b>  | mixture of asphalts, resins, polymers, organic solvents, fillers, SBS and other enriching additives |
| <b>Pensky-Martens flash point</b>   | no less than 40°C   |
| <b>Adhesive strength of the bituminous felt to bituminous felt</b>  | no less than 150 N  |
| <b>Flowability at temperature (60 ± 2)°C and inclination of 45° after 5 hours - roofing felt bonded with asphalt binder</b> | unacceptable displacement of the roofing felt and leakage of the binder                             |
| <b>Flexibility when bending on a roller with a diameter of 30 mm at temperature -5°C</b>                                    | no scratches or cracks  |
| <b>Water content</b>  | no more than 0,5% (m/m)   |
| <b>Drying time</b>  | approx. 24 h  |
| <b>Consumption</b>  | approx. 0,7 kg/m <sup>2</sup> /layer  |
| <b>Application temperature</b>  | from +5°C to +30°C  |
| <b>Reference document(s)</b>  | PN-B-24620:1998;<br>PN-B-24620:1998/Az1:2004;<br>IBDiM-KOT-2022/0815<br>issue 1                     |

### PROPERTIES

- Has very good adhesion to the substrate
- Creates insulation resistant to weather conditions
- Waterproof
- Quick and easy to use



GOOD ADHESION TO SUBSTRATES



SBS MODIFIED



FLEXIBLE

### APPLICATION

- Damp proofing of underground and ground parts of buildings



ON THE FOUNDATIONS



BRUSH



ROOFING BRUSH

### PACKAGING

#### Poland

- Packaging: 20 kg
- Quantity per pallet:  
- 20 kg - 33 pcs.

#### Export

- Packaging: 10 kg, 20 kg
- Quantity per pallet:  
- 10 kg - 60 pcs.  
- 20 kg - 33 pcs.

## METHOD OF USE

### ▪ CONDITIONS OF USE

The product is intended for outdoor use. The product should be used in airy places, away from fire.

The temperature of the substrate and air during the works should be from +5°C to +30°C. It is allowed to use the product at negative temperatures, provided that the substrate was dry.

Works should not be carried out during precipitation and strong sunlight.

### ▪ SUBSTRATE PREPARATION

Before applying the compound, the surface must be properly prepared. The substrate should be clean, dry, free of grease, streaks and other substances reducing adhesion. Any external right angles should be bevelled, and internal angles rounded off. If there are cavities in the substrate, honeycombing, gravel pockets and other unevenness, the substrate should be levelled and repaired, the cavities should be filled. The concrete substrate should be primed with NEXLER Penetrator G7 primer beforehand.

### ▪ PRODUCT CONTROL

Check the production date on the packaging before use. The product should not be incorporated beyond its shelf life. The product should not be objectionable (e.g. contain lumps, fibres, discolouration) after opening. After mixing, the compound should be homogeneous and free of lumps and clumps resulting from under-mixing. The correct consistency of the product is not dry or rubbery. When properly mixed, the product forms a homogeneous coating when spread over the surface with a tool.

### ▪ PRODUCT PREPARATION

Stir thoroughly before use, and repeat mixing from time to time during application. If stored at low temperatures, the product should be placed in a warm room for a minimum of 24 hours before use.

### ▪ APPLICATION METHOD

The product should be applied in the thinnest possible layers. Each subsequent layer can be applied after the previous one is completely dry, but not earlier than after 24 hours. The application of too thick of layers of **NEXLER SBS GR** may result in dripping of the compound on vertical surfaces, and during strong sunlight, blisters may form on the coating.

### ▪ CONTROL OF PERFORMANCE

When fresh, check the consumption of the material per unit and/or dedicated area on an ongoing basis. In addition, it is recommended to measure the thickness of the freshly applied sealing layer with special inspection plates, the measurement point should be filled with putty immediately. Properly made compound, after drying, should be a uniform, clean coating, without blisters, flakes and other defects, the coating should adhere closely to the primed substrate.

## TOOLS AND TOOL CLEANING

Notched steel trowel, roofing brush, paint brush.

Wash tools in organic solvents. If the product dries, leave it in the solvent until the dirt dissolves.

## STORAGE AND TRANSPORT

The shelf life of the product is 12 months from production date specified on the packaging. Store in dry and cool rooms in tightly sealed original packaging. Do not allow long exposure to high temperatures or sunlight during storage and transport. The product is not sensitive to negative temperatures.

## NOTES

Works should be carried out in accordance with technical conditions, manufacturer's instructions, health and safety standards and regulations. For information on how to deal with symptoms of disease, allergies or irritation of the skin or eyes, please refer to the Safety Data Sheet ([www.nexler.com](http://www.nexler.com)).

After completing the work, the remaining content of the product and container should be handed over to authorized companies.

## GENERAL RECOMMENDATIONS

Technical data and information on the method of use are given for a temperature of 23°C ± 2°C and a relative air humidity of 55%. In other conditions, the setting (drying) time may change significantly. The consumption of the product given in this sheet depends on the preparation of the substrate.

Do not use the product in combination with polystyrene foam.

Do not use the product for tar materials.

## SAFETY INFORMATION

Flammable liquid and vapour. Causes skin irritation. Causes serious eye irritation. May cause damage to organs through prolonged or repeated exposure. If medical advice is needed, have product container or label at hand. Keep out of reach of children. Keep away from heat, hot surfaces, sparks, open flames and other ignition sources. No smoking. Wash hands and exposed parts of the body thoroughly after handling. Wear protective gloves/protective clothing/eye protection/face protection. Dispose of contents/container to according to the instructions of the manufacturer or person authorized to dispose of waste.

## IMPORTANT INFORMATION

Please refer to the detailed conditions of use of the product before use. We guarantee the quality of our materials as part of our terms of sale and delivery. For buildings with special requirements that are not covered by this manual, we provide our Customers with our own professional advisory service.

The manufacturer has no influence on the improper use of the material, its use for other purposes or under conditions other than those described above. The guarantee only covers the quality of the delivered product. The correct and therefore effective use of the product is not subject to our control.

Neither the manufacturer nor his authorized representative may be held liable for any loss incurred as a result of improper use or storage of the product.

Employees of the company are authorized to provide technical information solely in accordance with this Technical Data Sheet. Information other than that contained in this sheet should be confirmed in writing.

If you have any doubts, consult the manufacturer.

### CONTACT DETAILS

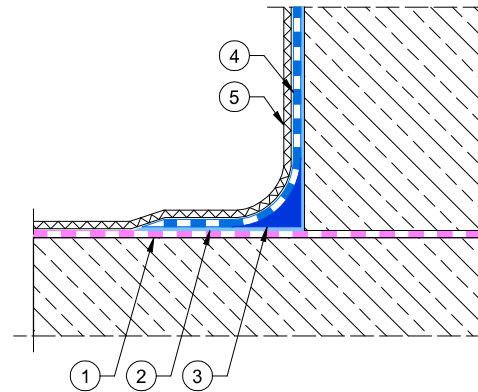
NEXLER sp. z o.o.  
 Łużycka 6, 81-537 Gdynia, Poland  
 tel.: +48 58 712 94 44  
 www.nexler.com  
 e-mail: dt@nexler.com

### ISSUE DATE

This Technical Data Sheet was issued on 10.03.2025.  
 Once we have issued a new Technical Data Sheet, this one is no longer valid.

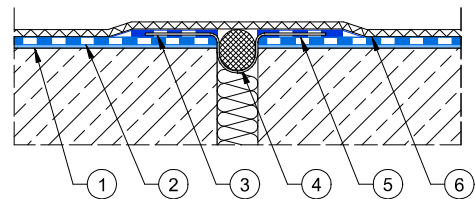
### DETAILS

#### Detail of a footing and foundation wall connection- damp-proof waterproofing



1. Horizontal insulation, e.g. NEXLER AQUAMINERAL 1K Ultra
2. Priming layer of NEXLER Penetrator G7
3. A facet made of NEXLER Styrbit 2000 K mass with a radius of 2 cm
4. NEXLER SBS GR damp-proof insulation
5. Geotextile NEXLER NexGreen Geo 110

#### Detail of an vertical expansion joint of the foundation wall



1. Priming layer of NEXLER Penetrator G7
2. NEXLER SBS GR damp-proof insulation
3. NEXLER Sealing Tape
4. NEXLER Backer Rod
5. NEXLER Styrbit 2000 K sealing mass
6. Geotextile NEXLER NexGreen Geo 110