



# NEXLER SBS DK

## Resin modified asphalt-rubber compound

### TECHNICAL DATA

|                                                                                                          |                                                         |
|----------------------------------------------------------------------------------------------------------|---------------------------------------------------------|
| <b>Composition</b>                                                                                       | mixture of asphalts, solvents and performance additives |
| <b>Flowability at temperature (60 ± 2)°C and inclination of 45° after 5 hours - mass on roofing felt</b> | unacceptable mass flow                                  |
| <b>Flexibility when bending on a roller with a diameter of 30 mm at temperature -5 °C</b>                | no scratches or cracks                                  |
| <b>Pensky-Martens flash point</b>                                                                        | no less than 40°C                                       |
| <b>Water content</b>                                                                                     | no more than 0,5% (m/m)                                 |
| <b>Number of layers</b>                                                                                  | 2 - 4                                                   |
| <b>Consumption</b>                                                                                       | 0,5 - 0,9 kg/m <sup>2</sup>                             |
| <b>Thickness of application of a single layer</b>                                                        | 0,45 - 1,0 mm                                           |
| <b>Drying time of a layer:</b><br>- no staining<br>- full dryness                                        | after 6 h<br>24 h                                       |
| <b>Substrate and ambient temperature during application</b>                                              | from +5°C to +30°C                                      |
| <b>Reference document(s)</b>                                                                             | PN-B-24620:1998<br>PN-B-24620:1998/Az1:2004             |

### PROPERTIES

- Very good adhesion to the substrate
- Resistant to aggressive substances contained in the soil
- High resistance to UV radiation
- High plasticity, even at negative temperatures
- Eliminates micro cracks in the substrate



### APPLICATION

- For the application of jointless damp proofing on underground parts of buildings
- For maintenance of roofing, e.g. roofing felt, bituminous shingles



### PACKAGING

#### Poland

- Plastic buckets: 10 kg, 20 kg
- Quantity per pallet:
  - 10 kg - 60 pcs.
  - 20 kg - 33 pcs.

#### Export

- Plastic buckets: 10 kg, 20 kg
- Quantity per pallet:
  - 10 kg - 60 pcs.
  - 20 kg - 33 pcs.

## METHOD OF USE

### CONDITIONS OF USE

Do not use indoors. The temperature of the substrate and air during the works should be between +5°C to +30°C. It is allowed to use the product at negative temperatures, provided that the substrate was dry before freezing and is free of ice, frost. During the works, very good ventilation of the work area should be ensured.

### SUBSTRATE PREPARATION

**Waterproofing:** The substrate must be bound, seasoned, loadbearing. The substrates should be cleaned mechanically; dust, any loose layers, sharp protruding edges and impurities that worsen adhesion should be removed. If there are cavities in the substrate, honeycombing, gravel pockets and other unevenness, the substrate should be levelled and repaired, the cavities should be filled.

Partitions made of small size elements should have an equal face, a full joint. The substrate on which the product will be used must be continuous. Prime the prepared substrate with NEXLER Penetrator G7.

**Maintenance of roofing:** The roof surface must be clean, dry and frost-free, stable. It must have specified slopes ensuring water drainage. Clean the existing bituminous felt substrates from loose impurities and peeling coatings. Ruptures, cavities in the felt, areas of leakage should be levelled or sealed with a roofing putty. Blisters on the felt should be cut and glued using a roofing putty. Repair any flashings. Examine and repair the fixing of other elements on the surface. Fix and repair elements of surface drainage. Prime the prepared substrate with NEXLER Penetrator G7.

### PRODUCT CONTROL

Check the production date on the packaging before use. The product should not be incorporated beyond its shelf life. The product should not be objectionable (e.g. lumps, fibres, discolouration) after opening. After mixing, the compound should be homogeneous and free of lumps and clumps resulting from under-mixing. Do not use a product that bears signs of frostbite. The correct consistency of the product is not dry or rubbery. When properly mixed, the product forms a homogeneous coating when spread over the surface with a tool.

### PRODUCT PREPARATION

**NEXLER SBS DK** is a ready-to-use product. A solvent may be released on the surface of the stored product. This does not indicate a defect or poor quality of the product. Before use, the product should be stirred with a low-speed stirrer until a homogeneous mass is obtained. If stored at low temperatures, the product should be placed in a warm room for a minimum of 24 hours before use.

### APPLICATION METHOD

**Waterproofing:** Depending on the expected water load, apply 2 or 4 layers of the compound using a paint brush or a roofing brush. Each layer should be applied after the previous one has dried. The sealing

tape should be embedded in the insulation in the connection of the vertical insulation with the horizontal insulation and on each break of the insulated surface. When using the product on surfaces exposed to vibrations, possible microcracks and/or water loads, it is recommended to make 4 layers of **NEXLER SBS DK** compound. In this case, a polypropylene nonwoven fabric should be embedded in the second layer.

**Maintenance of roofing:** For the maintenance of the bituminous felt, after preparing the substrate, apply **NEXLER SBS DK**, min. 2 layers. Apply each layer after the previous one has dried. At the points of contact between the roof panel and the chimneys, firewalls or similar areas, reinforce the coating by embedding strips of polypropylene nonwoven fabric or selling tape in the compound and rolling it to the appropriate height. On the last, fresh layer of the compound, apply felt sprinkling or after the coating has dried, apply a layer of **NEXLER Silver Protect** asphalt-aluminum lacquer. This will allow for extending the life of the applied coating (strengthening UV protection). During binding, the freshly applied layer should be protected against precipitation and strong sunlight.

### CONTROL OF PERFORMANCE

When fresh, check the consumption of the material per unit and/or dedicated area on an ongoing basis. In addition, it is recommended to measure the thickness of the freshly applied sealing layer with special inspection plates, the measurement point should be filled with putty immediately.

After applying a coat, it should be even, continuous, free from cracks or other damage.

## TOOLS AND TOOL CLEANING

Low-speed stirrer, roofing brush, paint brush.

Wash tools in organic solvents. If the product dries, leave it in the solvent until the dirt dissolves.

## STORAGE AND TRANSPORT

The shelf life of the product is 18 months from production date specified on the packaging. Store in dry and cool rooms in tightly sealed original packaging. Do not allow long exposure to high temperatures or sunlight during storage and transport. The product is not sensitive to negative temperatures.

## NOTES

Works should be carried out in accordance with technical conditions, manufacturer's instructions, health and safety standards and regulations. For information on how to deal with symptoms of disease, allergies or irritation of the skin or eyes, please refer to the Safety Data Sheet ([www.nexler.com](http://www.nexler.com)).

After work the remaining content of the product and container should be handed over to authorized companies.

## GENERAL RECOMMENDATIONS

Technical data and information on the method of use are given for a temperature of  $23^{\circ}\text{C} \pm 2^{\circ}\text{C}$  and a relative air humidity of 55%. In other conditions, the setting (drying) time may change significantly. The product consumption indicated in this sheet depends on the type, preparation and absorption capacity of the substrate. When using felt topping, a thicker layer of compound is recommended for better embedding of the aggregate.

Drying time is influenced by the type and fraction of the felt topping. Do not use for tar materials.

Do not use on structure elements exposed to negative water pressure, as this may lead to detachment of the insulation layer or formation of blisters on it.

Do not use the product inside rooms intended for the food industry and for permanent human occupancy.

Dimpled foils should not be used to protect bituminous mass due to the fact that dimples, under soil pressure, may locally press on the coating and damage it. The exception being profiled films with an integrated filtering non-woven fabric.

## SAFETY INFORMATION

Flammable liquid and vapour. Causes skin irritation. Causes serious eye irritation. May cause damage to organs through prolonged or repeated exposure. If medical advice is needed, have product container or label at hand. Keep out of reach of children. Keep away from heat, hot surfaces, sparks, open flames and other ignition sources. No smoking. Wash hands and exposed parts of the body thoroughly after handling. Wear protective gloves/protective clothing/eye protection/face protection. Dispose of contents/container according to the instructions of the manufacturer or person authorized to dispose of waste.

## IMPORTANT INFORMATION

Please refer to the detailed conditions of use of the product before use. We guarantee the quality of our materials as part of our terms of sale and delivery. For buildings with special requirements that are not covered by this manual, we provide our Customers with our own professional advisory service.

The manufacturer has no influence on the improper use of the material, its use for other purposes or under conditions other than those described above. The guarantee only covers the quality of the delivered product. The correct and therefore effective use of the product is not subject to our control. Neither the manufacturer nor his authorized representative may be held liable for any loss incurred as a result of improper use or storage of the product.

Employees of the company are authorized to provide technical information only and solely in accordance with this Technical Data Sheet. Information other than that contained in this sheet should be confirmed in writing. If you have any doubts, consult the manufacturer.

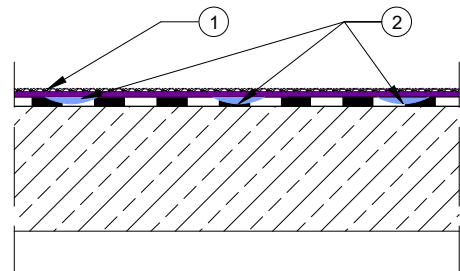
Once we have issued a new technical data sheet, this manual is no longer valid.

## CONTACT DETAILS

NEXLER sp. z o.o.  
 Łużycka 6, 81-537 Gdynia, Poland  
 tel.: +48 58 712 94 44  
 www.nexler.com  
 e-mail: dt@nexler.com

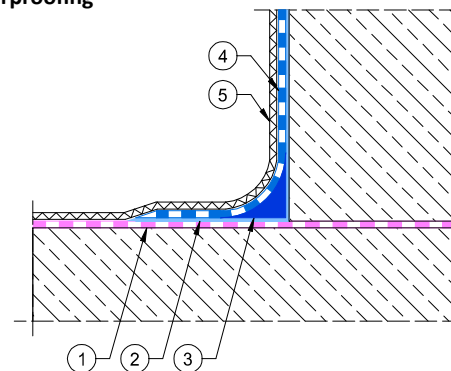
## DETAILS

### Renovation of a flat roof



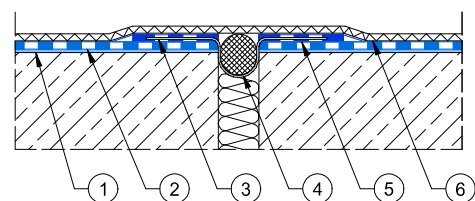
1. Renovation layers with felt topping - **NEXLER SBS DK**
2. Filling of cavities in the old felt coating - **NEXLER Arbolex Aqua Stop**

### Detail of a footing and foundation wall connection – damp-proof waterproofing



1. Mineral insulation e.g. **NEXLER AQUAMINERAL 1K Ultra**
2. Priming layer of **NEXLER Penetrator G7**
3. A facet made of **NEXLER Styrbite 2000 K** mass with a radius of 2 cm
4. Damp-proof insulation **NEXLER SBS DK**
5. Geotextile

### Detail of an expansion joint



1. Priming layer of **NEXLER Penetrator G7**
2. Damp-proof insulation **NEXLER SBS DK**
3. **NEXLER Sealing tape**
4. **NEXLER Backer rod**
5. **NEXLER SBS DK** sealing mass
6. Geotextile