



NEXLER Fundament

Asphalt bituminous felt for horizontal insulation

TECHNICAL DATA

Type of matrix	glass fibre tissue
Top surface finish	fine-grained topping
Bottom surface finish	film
Type of asphalt	oxidised
Visible defects	no visible defects
Thickness	2,0 ± 0,2 mm
Reaction to fire	class E
Watertightness	2 kPa (method A)
Tensile strength:	
• longitudinal elongation	500 ± 200 N/50 mm (4 ± 2) %
• transversal elongation	300 ± 150 N/50 mm (4 ± 2) %
Tear strength:	
• longitudinal	150 ± 100 N
• transversal	100 ± 50 N
Durability of the joint:	
• longitudinal overlap	300 ± 150 N/50 mm
• transversal overlap	500 ± 200 N/50 mm
Durability:	
• after artificial aging	waterproof at a pressure of ≥ 2 kPa (method A)
• after exposure to chemicals	acc. to annex A of the standard
Flexibility at a low temperature	≤ 0°C
Hazardous substances	See information on the substances contained in the product. Does not contain asbestos or coal tar components.
Compliance with the standard	EN 14967:2006, EN 13969:2004 and EN 13969:2004/A1:2006

PROPERTIES

- Watertight under pressure
- Resistant to being picked up by the wind during installation
- Provides continuity with underfloor insulation
- Ensures stability of masonry walls
- Does not require welding or adhesives
- Ensures quick and easy installation
- Allows connection to vertical foundation waterproofing



CONTINUITY WITH UNDERFLOOR INSULATION



WIDTH 25, 33 AND 50 CM



WATERTIGHT UNDER PRESSURE

APPLICATION

- Horizontal insulation of building
- Especially recommended for applying on foundations for masonry load-bearing and partition walls



FOR FOUNDATIONS

PACKAGING

- Roll length:
 - 10 m of bituminous felt 25 cm wide
 - 10 m of bituminous felt 33 cm wide
 - 10 m of bituminous felt 50 cm wide
- Quantity per pallet:
 - 96 rolls of bituminous felt 25 cm wide
 - 72 rolls of bituminous felt 33 cm wide
 - 50 rolls of bituminous felt 48 cm wide

METHOD OF USE

▪ CONDITIONS OF USE

Making an insulation using **NEXLER Fundament** bituminous felt should be carried out according to the technical design, in accordance with the current building regulations and the detailed guidelines for the design and execution of insulation contained in NEXLER Insulation Systems and the Technical Data Sheet.

The bituminous felt can be installed in ambient temperatures above +5°C. The temperature requirement applies to the time of day and night.

▪ SUBSTRATE PREPARATION

The concrete substrate should be even, mechanically resistant, with no water stagnation, free of impurities, loose coatings and elements (e.g. rubble) and greasy stains. The substrate can be primed for example with NEXLER BITFLEX Primer.

▪ PRODUCT PREPARATION

The product is ready-to-use. At lower ambient temperatures, i.e. below +10°C, the **NEXLER Fundament** bituminous felt should be stored for at least 24 hours in temperature not lower than +18°C before use.

▪ APPLICATION METHOD

NEXLER Fundament bituminous felt should be laid loosely on the concrete substrate. Maintain a bituminous felt overlap of min. 8 cm.

▪ CONTROL OF PERFORMANCE

Before proceeding with works, ensure that the bituminous felt is laid evenly with a minimum overlap of 8 cm.

STORAGE AND TRANSPORT

The rolls of **NEXLER Fundament** bituminous felt are protected with packing tapes before unrolling. Each roll has a label with the required data on it. The rolls are placed vertically on wooden industrial pallets and foiled.

During both transport and storage, the bituminous felt rolls must be protected from dampness, protected from sunlight and placed upright in a single layer in such a way as to prevent movement and damage. Rolls of felt should be stored on even ground, at a distance of min. 120 cm from radiators.

Transport safety regulations must be observed during transport.

NOTES

Works should be carried out in accordance with technical conditions, manufacturer's instructions, health and safety standards and regulations.

The remaining content of the product and container should be handed over to authorised companies.

WARRANTY

NEXLER Sp. z o.o. grants to the direct purchaser of the **NEXLER Fundament** bituminous felt a material warranty for the expected lifespan of the structure.

The condition to be met in order to exercise the rights resulting from the granted warranty is, among others, the use of the bituminous felt in accordance with current building regulations, the Technical Data Sheet and specific solutions included in the NEXLER Insulation Systems.

IMPORTANT INFORMATION

Please refer to the detailed conditions of use of the product before use.

We guarantee the quality of our materials as part of our terms of sale and delivery.

For buildings with special requirements that are not covered by this manual, we provide our Customers with our own professional advisory service.

The manufacturer has no influence on the improper use of the material, its use for other purposes or under conditions other than those described above. The guarantee only covers the quality of the delivered product. The correct and therefore effective use of the product is not subject to our control.

Neither the manufacturer nor his authorised representative may be held liable for any loss incurred as a result of improper use or storage of the product.

Employees of the company are authorised to provide technical information only in accordance with this technical data sheet. Information other than that contained in this sheet should be confirmed in writing.

If you have any doubts, consult the manufacturer.

Once we have issued a new technical data sheet, this manual is no longer valid.

▪ NAME AND NUMBER OF THE NOTIFIED CERTIFICATION BODY

Polish Centre for Testing and Certification S.A.
notified entity no. 1434

CONTACT DETAILS

NEXLER sp. z o.o.

Łużycka 6, 81-537 Gdynia, Polska

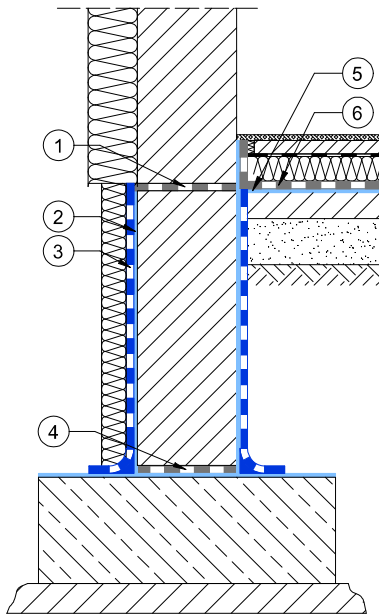
tel.: +48 58 712 94 44

www.nexler.com

e-mail: dt@nexler.com

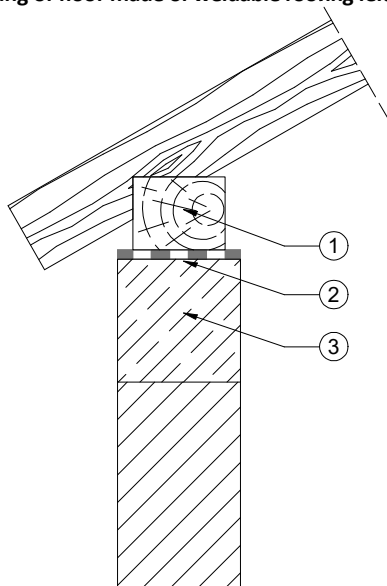
DETAILS

Detail of waterproofing of foundations - damp-proof insulation



1. Damp-proof insulation – **NEXLER Fundament**
2. Priming layer of NEXLER BITFLEX Primer diluted with water 1 : 1
3. NEXLER BITFLEX 1KP damp-proof insulation
4. Damp-proof insulation – **NEXLER Fundament**
5. Priming layer of NEXLER BITFLEX Primer diluted with water 1 : 1
6. Waterproofing of floor made of weldable roofing felt on the ground

Waterproofing of floor made of weldable roofing felt on the ground



1. Masonry wall plate
2. Separation layer – **NEXLER Fundament**
3. Knee wall beam