



# NEXLER Penetrator G7

Quick-drying primer modified with SBS for under bituminous felt

## TECHNICAL DATA

<b>Ingredients</b>	mixture of asphalts, solvents and performance additives
<b>Drying time</b>	depending on the substrate, approx. 30 min.
<b>Flow time at temperature (23 ± 0,5)°C, cup no. 4</b>	30 - 150 s
<b>Pensky-Martens flash point</b>	no less than 31 - 40°C
<b>Water content</b>	no more than 0,5% (m/m)
<b>Viscosity (flow time, Ø4 mm ISO cup)</b>	(58 ± 6) s
<b>Consumption</b>	approx. 0,2 l/m <sup>2</sup>
<b>Substrate and ambient temperature during application</b>	from 0°C to +30°C
<b>Reference document(s)</b>	PN-B-24620:1998; PN-B-24620:1998/Az1:2004; IBDiM-KOT-2019/0277 issue 3

## PROPERTIES

- Has excellent penetration properties into the substrate
- Protects concrete against moisture and corrosion
- Has very good adhesion to mineral substrates (approx. 1,2 MPa)
- Application can also be done on damp substrates
- Quick-drying



MODIFIED WITH SBS



MILD ODOUR



DEEPLY PENETRATING

## APPLICATION

- Priming the surface for bituminous felt, weldable and self-adhesive
- Priming bridge concrete slabs for bridge bituminous felt
- Priming of old roofing under/for each type of bituminous felt
- Priming of mineral substrates for insulation made of solvent-based compounds
- Creating damp-proof insulations
- Securing wooden and metal elements embedded in the ground



BRUSH



ROLLER



ROOFING BRUSH

## PACKAGING

### Poland

- Metal buckets: 5 l, 20 l
- Quantity per pallet:
  - 5 l - 140 pcs.
  - 20 l - 33 pcs.

### Export

- Metal buckets: 5 l, 20 l
- Quantity per pallet:
  - 5 l - 140 pcs.
  - 20 l - 33 pcs.

## METHOD OF APPLICATION

### ▪ CONDITIONS OF USE

Do not use indoors.

The temperature of the substrate and air during the works should be from +0°C to +30°C.

It is permissible to use the product at temperatures below 0°C, provided that the substrate is dry and free of ice and frost.

Works should not be carried out during precipitation and strong sunlight. During the works, very good ventilation of the work area should be ensured.

### ▪ SUBSTRATE PREPARATION

The substrate intended for priming should be bound, dry or semi dry, seasoned, load-bearing. The substrates should be cleaned mechanically, dust, any loose layers, sharp protruding edges and impurities that worsen adhesion should be removed. The substrate on which the product will be used must be continuous. If there are defects in the substrate, honeycombing, gravel pockets and other unevenness, the substrate should be levelled and repaired, the defects should be filled.

### ▪ PRODUCT CONTROL

Check the production date on the packaging before use. Do not use the product beyond its shelf life. The product should not be objectionable (e.g. contain lumps, fibres, discolouration) after opening. After mixing, the product should be homogeneous and free of lumps and clumps. Do not use a product that bears signs of frostbite. The correct consistency of the product is not dry or rubbery. When properly mixed and applied, the product does not form a layer on the surface, but penetrates into the substrate.

### ▪ PRODUCT PREPARATION

**Penetrator G7** is a ready-to-use product. Before use, the product should be mixed until a homogeneous mass is obtained. If stored at low temperatures, the product should be placed in a warm room for a minimum of 24 hours before use.

### ▪ APPLICATION METHOD

**Substrate priming:** A thoroughly mixed mass is applied to the primed surfaces with a roofing brush, a roller or a paint brush. On moist substrates, the primer should be rubbed in vigorously. It is recommended to work at positive temperatures. The primer dries for up to approx. 30 minutes on concrete substrates. For asphalt felt substrates, the drying time of the primer is approx. 1 hour. There are no contraindications to the use of polystyrene foam on a primer after complete evaporation of the solvent – approx. 48 hours.

**Damp-proof coatings:** It is recommended to apply the **Penetrator G7** to the primed surface in four working applications. The next layer can be applied after the previous one has fully dried. The total thickness of a dry layer should be at least 1 mm. Apply material by hand, using a brush or a float. The freshly applied coating must be protected from strong sunlight (e.g. by shading), flooding, rain and negative temperatures. After complete binding, the waterproof coating should be protected against mechanical damage associated with backfilling the excavation.

### ▪ CONTROL OF PERFORMANCE

Thickness of a layer should be controlled by checking the material consumption on a dedicated surface.

The applied product should be free of flaking and damage. Properly applied primer should adhere tightly to the substrate after drying and cover it completely.

## TOOLS AND TOOL CLEANING

Brush, paint roller, roofing brush.

Tools during and after the works should be washed with gasoline solvents.

## STORAGE AND TRANSPORT

The shelf life of the product is 24 months from production date specified on the packaging. Store in dry and cool rooms, in tightly sealed, original packaging. Do not allow long exposure to high temperatures or sunlight during storage and transport. The product is not sensitive to negative temperatures during storage and transport.

## NOTES

Works should be carried out in accordance with technical conditions, manufacturer's instructions, health and safety standards and regulations. For information on how to deal with symptoms of disease, allergies or irritation of the skin or eyes, please refer to the Safety Data Sheet ([www.nexler.com](http://www.nexler.com)).

After work the remaining content of the product and container should be handed over to authorized companies.

## GENERAL RECOMMENDATIONS

Technical data and information on the method of use are given for a temperature of 23°C ± 2°C and a relative air humidity of 55%. In other conditions, the setting (drying) time may change significantly. The consumption of the product given in this sheet depends on the preparation of the substrate.

Do not use the product inside rooms intended for the stay of people and the food industry. Do not use the product for tar materials.

## SAFETY INFORMATION

Flammable liquid and vapour. Causes skin irritation. Causes serious eye irritation. May cause respiratory irritation. May cause damage to organs through prolonged or repeated exposure. Harmful to aquatic life with long lasting effects. If medical advice is needed, have product container or label at hand. Keep out of reach of children. Keep away from heat, hot surfaces, sparks, open flames and other ignition sources. No smoking. Wash hands and exposed parts of the body thoroughly after handling. Wear protective gloves/protective clothing/eye protection/face protection. Dispose of contents/container according to the instructions of the manufacturer or person authorized to dispose of waste.

## IMPORTANT INFORMATION

Please refer to the detailed conditions of use of the product before use. We guarantee the quality of our materials as part of our terms of sale and delivery.

For buildings with special requirements that are not covered by this manual, we provide our Customers with our own professional advisory service.

The manufacturer has no influence on the improper use of the material, its use for other purposes or under conditions other than those described above. The guarantee only covers the quality of the delivered product. The correct and therefore effective use of the product is not subject to our control.

Neither the manufacturer nor his authorized representative may be held liable for any loss incurred as a result of improper use or storage of the product.

Employees of the company are authorized to provide technical information only in accordance with this technical data sheet. Information other than that contained in this sheet should be confirmed in writing.

If you have any doubts, consult the manufacturer.

Once we have issued a new technical data sheet, this manual is no longer valid.

## CONTACT DETAILS

NEXLER sp. z o.o.

Łużycka 6, 81-537 Gdynia, Poland

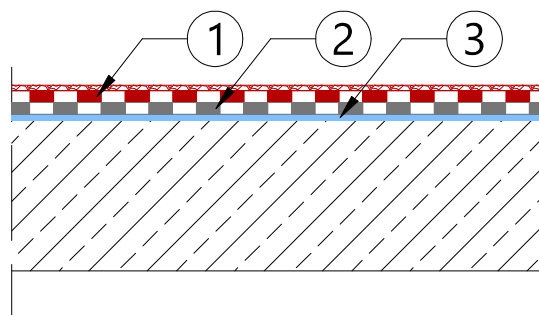
tel.: +48 58 712 94 44

www.nexler.com

e-mail: dt@nexler.com

## DETAILS

Detail - waterproofing of a full flat roof.



1. Top coat bituminous felt
2. Base bituminous felt
3. Priming layer **NEXLER Penetrator G7**