



# NEXLER Dysperbit

## Dispersive asphalt-rubber compound

### TECHNICAL DATA

Coating formation time	≤ 6
Time interval between applying following layers	approx. 5 h
Resistance to rain	after approx. 5 h
Backfilling the excavation	after 3 days
Water content in the emulsion	no more than 50% (m/m)
Dilution capacity of the emulsion in water	no less than 300% (V/V)
Content of non-emulsified asphalt	no more than 1,2% (m/m)
Flowability of the coating from the roofing felt in the vertical position at the temperature 75 °C for 5 h	does not flow
Permeability of the coating at 500 mm water column in 24 h	unacceptable
<b>Consumption:</b> - priming mineral and bituminous substrates - priming mineral wool - maintenance of roof coverings - damp-proof insulation	0,2 kg/m <sup>2</sup>  min. 0,8 kg/m <sup>2</sup> 0,5 kg/m <sup>2</sup> /layer 1,5 kg/m <sup>2</sup> /mm - thickness of a dry layer min. 1 mm
Substrate and ambient temperature during application	from +5°C to +30°C
Reference document(s)	PN-B-24002:1997; PN-B-24002:1997/Ap1:2001

### PROPERTIES

- Very good adhesion to mineral substrates and roofing felt
- Can be applied both to dry and matt-damp substrates
- Quick and easy to use
- Has thixotropic properties
- Solvent-free, safe in contact with polystyrene
- Resistant to weather conditions
- Resistant to flowing



GOOD ADHESION TO SUBSTRATES



FOR DRY AND SLIGHTY DAMP SURFACES



SOLVENT-FREE



SAFE FOR POLYSTYRENE

### APPLICATION

- Priming of mineral substrates for proper bituminous insulation
- Priming mineral wool for asphalt felt insulation
- Damp proofing of underground elements of buildings and structures
- Maintenance of roof coverings



FOR FOUNDATIONS, ROOFS AND TERRACES



ROOFING BRUSH



BRUSH

### PACKAGING

#### Poland

- Plastic buckets:  
5 kg, 10 kg, 20 kg
- Quantity per pallet:  
- 5 kg - 100 pcs.  
- 10 kg - 60 pcs.  
- 20 kg - 33 pcs.

#### Export

- Plastic buckets:  
5 kg, 10 kg, 20 kg
- Quantity per pallet:  
- 5 kg - 100 pcs.  
- 10 kg - 60 pcs.  
- 20 kg - 33 pcs.

## METHODS OF USE

### CONDITION OF USE

The temperature of the substrate and air during the works should be from +5°C to +30°C.

Works should not be carried out during precipitation and strong sunlight.

During the work, very good verification of the work area should be ensured.

### SUBSTRATE PREPARATION

For using on substrates such as: concrete/reinforced concrete, traditional plaster, cement or cement-lime plaster, cement underlays, stable, existing seamless waterproof coatings, unless they are made of tar-based soft-bitumen materials, stable, existing asphalt felt insulation.

The substrate intended for priming must be bound, seasoned, load-bearing. The substrates should be cleaned mechanically, dust, any loose layers, sharp protruding edges and impurities that worsen adhesion should be removed. If there are cavities in the substrate, honeycombing, gravel pockets and other unevenness, the substrate should be levelled and repaired, the cavities should be filled. Partitions made of small size elements should have an equal face, a full joint. On jointed masonry a levelling plaster should be applied. The substrate on which the product will be used must be continuous. Before applying the waterproofing material, mineral substrates (concrete, plasters) should be primed with **Dysperbit** diluted with water in a 1:1 ratio. For materials with reduced absorption, hydrophobized, (e.g. "waterproof concrete"), use NEXLER BITFLEX Primer for priming.

Clean the existing bituminous substrates from impurities, loose and peeling coatings. Ruptures, cavities in the felt, areas of leakage should be levelled or sealed with a roofing putty. Blisters on the felt should be cut and glued using a roofing putty. Repair any flashings. Examine and repair the fixing of other elements on the surface. Fix and repair elements of surface drainage.

### PRODUCT CONTROL

Check the production date on the packaging before use. The product should not be incorporated beyond its shelf life. The product should not be objectionable (e.g. contain lumps, fibres, discolouration) after opening. After mixing, the compound should be homogeneous and free of lumps and clumps resulting from under-mixing. Do not use a product that bears signs of freezing. The correct consistency of the product is not dry or rubbery. When properly mixed, the product forms a homogeneous coating when spread over the surface with a tool.

### PRODUCT PREPARATION

Stir thoroughly before use, and repeat mixing from time to time during application.

When using the product as a primer, dilute it with water in a 1:1 ratio, mix thoroughly.

### APPLICATION METHOD

**Substrate priming:** Diluted **Dysperbit** should be applied with of a paint brush or a roofing brush to a properly prepared surface.

**Priming mineral wool slabs:** Undiluted **Dysperbit** should be applied with of a paint brush or a roofing brush to a surface made of mineral wool.

**Maintenance of felt coverings:** After filling in the defects and full drying of the compound, apply **Dysperbit** to the whole surface of the roof covering in two layers, applying each after the previous one has dried. In areas where the roof slopes meets the chimney, at ducts and ventilation pipes etc. use reinforcement by embedding a reinforcing fabric and turning it up to the appropriate height. The last, still fresh layer, is recommended to be sprinkled with a mineral topping. That will allow for a significant extension of the life of the maintenance thus carried out.

**Damp-proof coatings:** It is recommended to apply the **Dysperbit** to the primed surface. The successive layer can be applied after the previous one has fully dried. The total thickness of a dry layer should be at least 1 mm. Material should be applied by hand, using a brush or a roofing brush. The freshly applied coating must be protected from strong sunlight (e.g. by shading), flooding, rain and negative temperatures. After complete bonding, the waterproof coating should be protected against mechanical damage associated with backfilling the excavation. Therefore, it is recommended to use additional protection, if not in the form of waterproof thermal insulation boards, then PE, EPDM film or non-woven fabric. Dimpled foils should not be used to protect bituminous mass due to the fact that dimples, under soil pressure, may locally press on the coating and damage it. The exception being profiled films with an integrated filtering non-woven fabric. Do not allow rainwater to penetrate the partition and go under the waterproofing layer from the substrate side.

### CONTROL OF PERFORMANCE

When fresh, check the material consumption for the separated area on a regular basis. After it has dried, a properly made coating should be a uniform, clean coating, without flakes and other defects. The coating should adhere closely to the primed substrate.

A properly primed surface, after the solution has dried, should have a uniform colour, without streaks and discoloration. The resulting coating should be free of flakes and damage.

## TOOLS AND TOOL CLEANING

Low-speed mixer, brush, paint roller.

Wash tools with water during work and after its completion, and wipe dry. In case the product dries on the tool, clean with petrol solvents.

## STORAGE AND TRANSPORT

The shelf life of the product is 12 months from production date specified on the packaging. Store in dry and cool rooms, at temperature above +5°C, in tightly sealed, original packaging.

## NOTES

Works should be carried out in accordance with technical conditions, manufacturer's instructions, health and safety standards and regulations. For information on how to deal with symptoms of disease, allergies or irritation of the skin or eyes, please refer to the Safety Data Sheet (www.nexler.com).

After works are finished, hand over the remaining content of the product and the container to authorised companies.

## GENERAL RECOMMENDATIONS

Technical data and information on the method of use are given for a temperature of  $23^{\circ}\text{C} \pm 2^{\circ}\text{C}$  and a relative air humidity of 55%.

In other conditions, the setting (drying) time may change significantly.

The consumption of the product given in this sheet depends on the preparation of the substrate.

Do not use the product for tar materials. Do not use the product inside rooms intended for the stay of people and the food industry.

## SAFETY INFORMATION

May cause an allergic skin reaction. If medical advice is needed, have product container or label at hand. Keep out of reach of children. Wash hands and exposed parts of the body thoroughly after handling. Wear protective gloves/protective clothing/eye protection/face protection. Dispose of contents/container according to the instructions of the manufacturer or person authorized to dispose of waste.

## IMPORTANT INFORMATION

Please refer to the detailed conditions of use of the product before use.

We guarantee the quality of our materials as part of our terms of sale and delivery.

For buildings with special requirements that are not covered by this manual, we provide our Customers with our own professional advisory service.

The manufacturer has no influence on the improper use of the material, its use for other purposes or under conditions other than those described above. The guarantee only covers the quality of the delivered product. The correct and therefore effective use of the product is not subject to our control.

Neither the manufacturer nor his authorized representative may be held liable for any loss incurred as a result of improper use or storage of the product.

Employees of the company are authorized to provide technical information only and solely in accordance with this Technical Data Sheet. Information other than that contained in this sheet should be confirmed in writing.

If you have any doubts, consult the manufacturer.

Once we have issued a new Technical Data Sheet, this manual is no longer valid.

## CONTACT DETAILS

NEXLER sp. z o.o.

Łużycka 6, 81-537 Gdynia, Poland

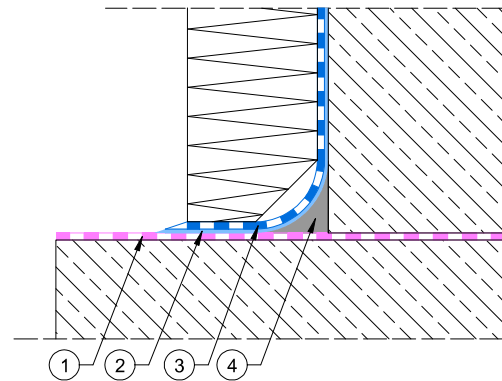
tel.: +48 58 712 94 44

www.nexler.com

e-mail: dt@nexler.com

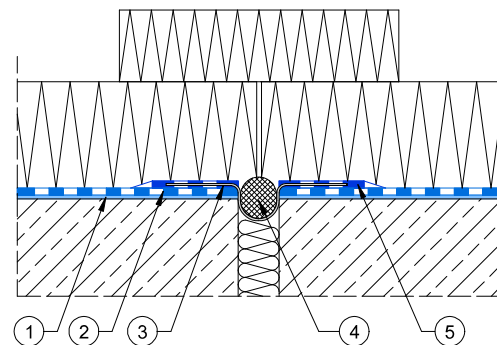
## DETAILS

Detail of a footing and foundation wall connection – damp-proof waterproofing



1. Horizontal insulation, eg. NEXLER AQUAMINERAL 1K Ultra
2. Priming layer of NEXLER Dysperbit diluted with water 1 : 1
3. NEXLER Dysperbit damp-proof insulation
4. A facet made of NEXLER RENOBUD R 103 mortar with a radius of 5 cm or made of NEXLER BITFLEX 1KP mass with a radius of 2 cm

Detail of a vertical expansion joint in a foundation wall



1. Priming layer of NEXLER Dysperbit diluted with water 1 : 1
2. NEXLER Dysperbit damp-proof insulation
3. NEXLER Sealing Tape
4. NEXLER Backer Rod
5. NEXLER BITFLEX 1KP sealing mass