



NEXLER BITFLEX Quick Spray

Bituminous-latex anionic emulsion,
to be used with a coagulant with spray method

Innovative technology,
based on a fine-particle anionic emulsion

TECHNICAL DATA

Ingredients:	- Component A:	bituminous-latex anionic emulsion
	- Component B:	coagulant
Mixing ratio for the coagulant:		from 8:1 to 10:1 (water:calcium chloride)
Mixing ratio:		from 5:1 to 10:1 (bitumen:coagulating solution)
Resistance to rain:		immediate, right after application
Drying time:		3-7 days
Bulk density:		1 kg/cm ³
Dilution capacity of the emulsion in water:		no less than 300%
Content of non-emulsified asphalt:		no more than 1,2%
Flowability of the coating from the roofing felt in the vertical position at the temperature 75°C for 5 h:		does not flow
Permeability of the coating at 500 mm water column in 24 h:		unacceptable
Flexibility when bending on a cylinder Ø 30 mm:		≤ -20°C
Resistance to increased temperatures:		≥ +120°C
Temperature of use:		from -30°C to +120°C
Elongation:		≥ 1000%
Thickness of a layer:		min. 3 mm
Consumption:		
- damp-proof insulation:		4,9 kg/m ² for a thickness of 3 mm
- waterproof insulation:		6,6 kg/m ² for a thickness of 4 mm
- priming:		0,2 - 0,3 kg/m ²
Temperature of application:		from +5°C do +30°C
Reference documents:		PN-B-24002:1997

PROPERTIES

- Creates a coating immediately resistant to rain
- Extremely flexible – elongation up to 1000%
- Seamless, forms an even and homogeneous coating regardless of the form of the surface
- Efficient
- Enables waterproofing to be carried out quickly
- Convenient to use
- Can be applied to surfaces that are difficult to access
- Eco-friendly, does not contain solvents or toxic substances
- Safe in contact with polystyrene foam



FINE-PARTICLE TECHNOLOGY



IMMEDIATE RESISTANCE TO RAIN



VERY HIGH RESISTANCE TO MECHANICAL DAMAGE



DOES NOT CONTAIN SOLVENTS

APPLICATION

- Waterproofing and corrosion protection of underground and above-ground parts of buildings in residential and industrial construction
- Waterproofing of structures in traffic engineering



OUTDOOR



VERTICAL AND HORIZONTAL



SPRAYING

PACKAGING

- Packaging: 30 l, 1000 l
- Quantity per pallet:
- 30 l - 18 pcs.

METHOD OF APPLICATION

▪ CONDITIONS OF USE

The temperature of the substrate and air during the works should be from +5°C to +30°C.

Works should not be carried out during precipitation and strong sunlight. Requires shade when exposed to sunlight.

▪ SUBSTRATE PREPARATION

The surface must be properly prepared before applying **BITFLEX Quick Spray**. The substrate intended for product application should be continuous, bonded, seasoned and load-bearing. If the substrate is contaminated with petroleum-based agents, these must be removed effectively. The surface should be cleaned mechanically, dust, tarnish, any loose pieces and layers, sharp protruding edges. On surfaces where cement laitance appears, hydrodynamic cleaning (with a high-pressure cleaner) should be used. If there are cavities in the substrate (honeycombing, gravel pockets and other unevenness), it should be repaired, filled and levelled. A suitable levelling mortar should be used to repair cavities.

In case of pressurised or ponding water and a very uneven substrate (masonry made of small-scale elements), it is recommended to lay a levelling plaster in exceptional cases.

BITFLEX Quick Spray can be applied to existing coatings of dispersion bituminous masses.

The substrate must first be primed with **BITFLEX Quick Spray** without coagulant, priming can be carried out by spraying with a single nozzle (without coagulant) or with a brush.

Edges and corners: The exterior right angles should be chamfered (bevelled), while the interior angles should be properly rounded by making facets. On mineral substrates, a facet can be made of mineral mortar e.g. NEXLER RENOBUD R-103 (radius 4-5 cm) or PMBC (KMB) compound e.g. BITFLEX 1KP (radius 2 cm). On bituminous substrates make a facet of PMBC (KMB) compound. A cat's tongue trowel is best suited for creating facets.

▪ PRODUCT PREPARATION

The **BITFLEX Quick Spray** product must be thoroughly mixed before application.

The proportions of **BITFLEX Quick Spray** to coagulation solution are chosen according to the type of substrate and weather conditions. Spray bitumen and coagulant solution in a ratio of 5:1 to 10:1 (bitumen : coagulant mixed with water). The bitumen and coagulation solution must not be mixed together before spraying.

Coagulating solution: Dissolve calcium chloride in water in a ratio of 8:1 to 10:1 (water : calcium chloride).

▪ APPLICATION METHOD

BITFLEX Quick Spray is applied mechanically using an airless spraying device. The application process is carried out by feeding two components: a dispersion bitumen-rubber compound and a coagulant, into two circuits consisting of flexible, high-pressure hoses. The hoses are connected to a double atomiser, at the end of which two conical nozzles are attached. The nozzles should be positioned in such an order that **BITFLEX Quick Spray** is the first to make contact with the substrate. In order to set the correct pressure of the **BITFLEX Quick Spray** and coagulant solution with water, it is advisable to carry out a test by directing the spray into a bucket (or other container). Keep spray nozzles between 0.7 and 1.0 m from the substrate. Spraying should be carried out perpendicular to the surface of the substrate. The spray is performed in one direction (left to right) with no return. If you need to make corrections or create a thicker layer, withdraw the lances and start spraying from a convenient location. The working surface must end, or start, a minimum of 30 cm beyond the concave or convex edge.

During application, we recommend wearing a protective suit along with a protective visor that can be cleaned of the emulsion.

The coating should be protected against mechanical damage, e.g. with geotextile, HDPE foil or polystyrene hardboards (the choice of protection depends on the type of construction).

▪ CONTROL OF PERFORMANCE

Thickness of a layer should be checked by material consumption control on a dedicated surface. The use of an inspection plate will result in damage that needs to be repaired by spraying an additional layer or applying a repair compound.

After it has dried, a properly made coating should be a uniform, clean coating, without flakes and other defects. The coating should adhere closely to the primed substrate.

TOOLS AND TOOL CLEANING

NEXLER MQ30/50 Spray unit.

When the work is finished, run petrol through the part of the machine and the hoses in contact with the bitumen until clear petrol flows out.

STORAGE AND TRANSPORT

The shelf life of the product is 12 months from production date. Store in dry and cool rooms at temp. above +5°C, in tightly sealed, original packaging. The product must be protected from heat and direct sunlight.

NOTES

Works should be carried out in accordance with technical conditions, manufacturer's instructions, health and safety standards and regulations.

For information on how to deal with symptoms of disease, allergies or irritation of the skin or eyes, please refer to the Safety Data Sheet (www.izohan.eu).

The remaining content of the product and container should be handed over to authorized companies.

GENERAL RECOMMENDATIONS

Technical data and information on the method of use are given for a temperature of 23°C ± 2°C and a relative air humidity of 55%. In other conditions, the setting (drying) time may change significantly.

The consumption of the product given in this sheet depends on the preparation of the substrate. Do not use for tar materials.

SAFETY INFORMATION

Causes skin irritation. Causes serious eye damage. Harmful to aquatic life with long lasting effects. If medical advice is needed, have product container or label at hand. Keep out of reach of children. Wear eye protection. IF IN EYES: Rinse cautiously with water for several minutes. Remove contact lenses, if present and easy to do. Continue rinsing. Immediately call a doctor. Dispose of contents/container to be handed over to the person authorized to dispose of waste or by returning to the supplier.

IMPORTANT INFORMATION

Please refer to the detailed conditions of use of the product before use. We guarantee the quality of our materials as part of our terms of sale and delivery. For buildings with special requirements that are not covered by this manual, we provide our Customers with our own professional advisory service. The manufacturer has no influence on the improper use of the material, its use for other purposes or under conditions other than those described above. The guarantee only covers the quality of the delivered product. The correct and therefore effective use of the product is not subject to our control.

Neither the manufacturer nor his authorized representative may be held liable for any loss incurred as a result of improper use or storage of the product.

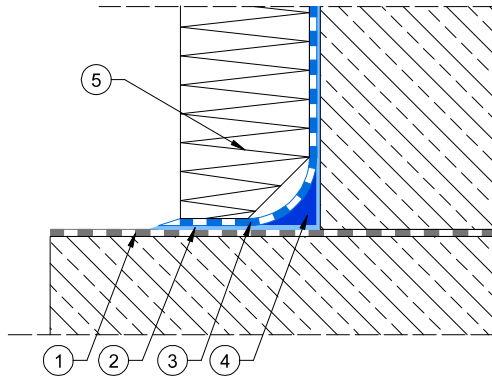
Employees of the company are authorized to provide technical information only and solely in accordance with this technical data sheet. Information other than that contained in this sheet should be confirmed in writing.

If you have any doubts, consult the manufacturer.

Once we have issued a new technical data sheet, this manual is no longer valid.

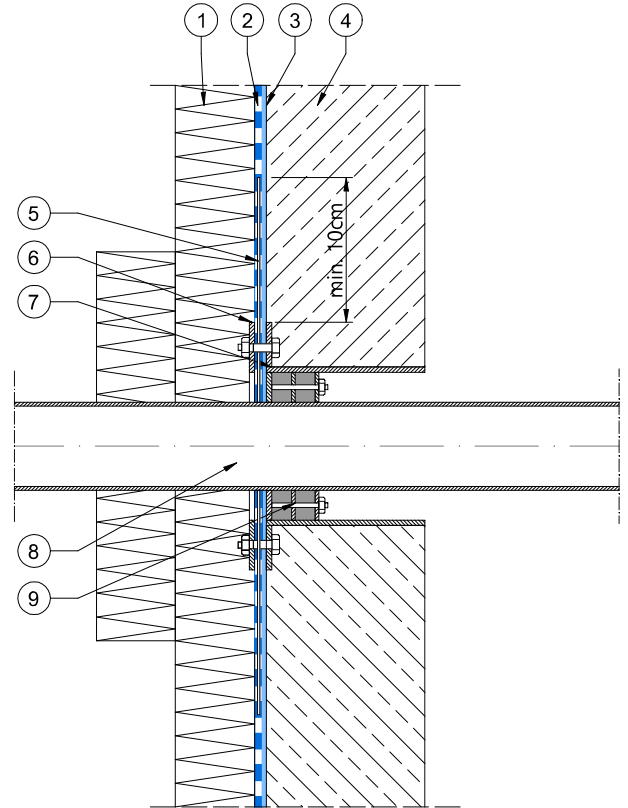
DETAILS

**Detail of footing and foundation wall connection -
- waterproofing**



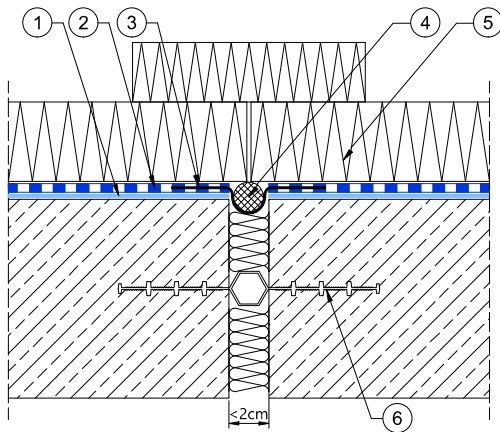
1. Horizontal insulation made of bituminous felt
2. Priming layer of **BITFLEX Quick Spray**
3. Waterproofing **BITFLEX Quick Spray** and coagulant solution
4. A facet made of NEXLER BITFLEX 1KP with a radius of 2 cm
5. Polystyrene and laminated polystyrene boards (EPS/roofing felt), bonded by NEXLER BITFLEX 1KP

**Detail of pipe passage through foundation wall -
- waterproofing**



1. Polystyrene and laminated polystyrene boards (EPS/roofing felt), bonded by NEXLER BITFLEX 1KP
2. Waterproofing **BITFLEX Quick Spray** and coagulant solution
3. Priming layer of **BITFLEX Quick Spray**
4. Foundation wall
5. Sealing sleeve
6. Movable flange
7. Fixed flange
8. Installation pipe
9. Clamping seal

Expansion joint detail - waterproof insulation



1. Priming layer of **BITFLEX Quick Spray**
2. Waterproofing **BITFLEX Quick Spray** and coagulant solution
3. IZOHAN Sealing tape
4. IZOHAN Expansion cord
5. Polystyrene and laminated polystyrene boards (EPS/roofing felt), bonded by NEXLER BITFLEX 1KP
6. Sealing insert