



NEXLER PREMIUM PYE PV200 S40H

Heat weldable top layer bituminous felt

TECHNICAL DATA

Type of reinforcement	non-woven polyester reinforced with glass fibers
Top finishing	coarse grained
Low temperature flexibility	≤ -20°C
Length	≥ 6,0 m
Width	≥ 0,99 m
Straightforwardness	≤ 10 mm per 6 m of roll length
Thickness	(4,0 ± 0,2) mm
Resistance to external fire exposure	B _{roof} (t ₁), B _{roof} (t ₂)
Reaction to fire	class E
Watertightness: waterproof at a pressure	10 kPa (method A) 250 kPa (method B)
Maximum tensile force:	
- longitudinal extension	850 ± 250 N/50 mm (50 ± 15) %
- transversal extension	600 ± 200 N/50 mm (50 ± 15) %
Resistance to root penetration	NPD
Durability: flow resistance at elevated temperature	100 ± 10°C
Dimensional stability	≤ 0,5%
Compliance with the standard	EN 13707:2004+A2:2009

PROPERTIES

- Flexible and durable reinforcement resistant to high temperatures
- Double SBS modification
- Approved for use in reduced ambient temperatures



2xSBS



HIGH DURABILITY AND THERMAL STABILITY



14-YEARS SYSTEM WARRANTY

APPLICATION

- Top layer bituminous felt in multilayer roofing
- Restoration of old bituminous felt coverings
- Multi-layer roofing with a slope of min. 1%



FOR ROOFS



WELDING



RENOVATION OF BITUMEN COVERINGS

PACKAGING

Poland

- Roll length: 6 m
- Quantity per pallet: 24 rolls (144 m²)

Export

- Roll length: 6 m
- Quantity per pallet: 24 rolls (144 m²)

METHODS OF USE

▪ CONDITIONS OF USE

Making an insulation using **NEXLER PREMIUM PYE PV200 S40H** bituminous felt should be carried out according to the technical design, in accordance with the current building regulations and the detailed guidelines for the design and execution of insulation contained in NEXLER Insulation Systems and the Technical Data Sheet.

The bituminous felt should be installed in ambient temperatures of above 0°C, this requirement applies to the time of day and night.

Do not carry out insulation work during strong winds and precipitation.

▪ SUBSTRATE PREPARATION

The substrate should meet the following requirements:

- dry substrate (no visible traces of moisture or darkening caused by moisture),
- clean substrate (the surface is free of dust, oil stains, grease and other contaminants),
- smooth substrate (local unevenness and cavities in the surface of concrete do not exceed ± 5 mm),
- even substrate (the gaps between the surface of the substrate and a 4m long patch placed on the concrete substrate do not exceed 10 mm),
- roof slope inclination min. 1%.

Before welding **NEXLER PREMIUM PYE PV200 S40H** bituminous felt is recommended to prime old bitumen layers with water-based bitumen products for example NEXLER BITFLEX Primer, or solvent-based bitumen primers for example NEXLER Penetrator G7.

▪ PRODUCT CONTROL

The product should not raise any objections. The roll should be evenly rolled, without kinks.

▪ PRODUCT PREPARATION

If it is necessary to make the covering at low ambient temperatures, it is recommended to store the rolls in heated rooms at a temperature of not less than +18°C for 24 hours before installation.

▪ APPLICATION METHOD

The **NEXLER PREMIUM PYE PV200 S40H** bituminous felt should be welded to the previously installed underlayer asphalt felt or to the primed old asphalt felt covering. Application should be carried out after the priming agent has completely dried (or cured).

As a result of heating both the substrate and the underside of the bituminous felt with a burner, the thin protective plastic foil melts, the asphalt is slightly melted and the bituminous felt sticks evenly to the substrate. Maintain a bituminous felt overlap min. 8 cm wide along the length of the felt strip and an overlap min. 12 cm wide at the joint perpendicular to the length of the felt strip.

Overlaps of the bituminous felt at joints perpendicular to the length of the bituminous felt on adjacent sheets should be offset from each other by at least 50 cm. An asphalt outflow of approx. 0,5 - 1 cm in width over the entire length of the welded overlap is required.

▪ CONTROL OF PERFORMANCE

During acceptance, the following should be checked:

- correctness of welding of overlaps - a continuous trickle of melted asphalt mixture on the overlaps is required,
- adhesion of the bituminous felt to the substrate,
- correctness of detail work.

WARRANTY

The manufacturer NEXLER sp. z o.o. provides the direct purchaser of **NEXLER PREMIUM PYE PV200 S40H** bituminous felt with:

- a system warranty of 14 years for a two-layer covering on a concrete substrate primed with priming agents manufactured by NEXLER sp. z o.o.,
- a standard material warranty of 10 years for a two-layer covering,
- 8-year material warranty in case of refurbishment of old roofing.

Details of the guarantee provided to the purchaser are contained in the guarantee card.

TOOLS AND TOOL CLEANING

Roofing gas burner, bituminous felt uncoiler.

STORAGE AND TRANSPORT

The rolls of **NEXLER PREMIUM PYE PV200 S40H** bituminous felt are protected with packing tapes before unrolling. Each roll has a label with the required data on it. The rolls are placed vertically on wooden industrial pallets and foiled.

During transportation and storage, the rolls must be protected from moisture and exposure to sunlight, and be placed upright in one layer in a way preventing any dislocation or damage.

The bituminous felt rolls must be stored on a flat surface at a distance of at least 120 cm from radiators.

Transportation must be carried out in compliance with applicable shipment safety regulations.

NOTES

Works should be carried out in accordance with technical conditions, manufacturer's instructions, health and safety standards and regulations.

Before applying the top layer bituminous felt, make sure that the next roll to be unrolled does not differ in the shade of the sprinkles.

The sprinkle is a natural raw material and may vary in shade.

IMPORTANT INFORMATION

Please refer to the detailed conditions of use of the product before use.

We guarantee the quality of our materials as part of our terms of sale and delivery.

For buildings with special requirements that are not covered by this manual, we provide our Customers with our own professional advisory service.

The manufacturer has no influence on the improper use of the material, its use for other purposes or under conditions other than those described above. The guarantee only covers the quality of the delivered product. The correct and therefore effective use of the product is not subject to our control.

Neither the manufacturer nor his authorized representative may be held liable for any loss incurred as a result of improper use or storage of the product.

Employees of the company are authorized to provide technical information only and solely in accordance with this Technical Data Sheet. Information other than that contained in this sheet should be confirmed in writing.

If you have any doubts, consult the manufacturer.

CONTACT DETAILS

NEXLER sp. z o.o.
Łużycka 6, 81-537 Gdynia, Poland
tel.: +48 58 712 94 44
www.nexler.com
e-mail: dt@nexler.com

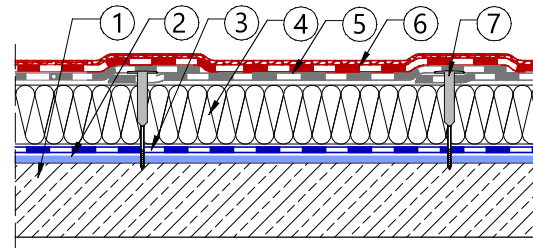
ISSUE DATE

This Technical Data Sheet was issued on 23.01.2025.

Once we have issued a new Technical Data Sheet, this one is no longer valid.

DETAILS

Covering on concrete substrate with thermal insulation



1. Concrete substrate constructed with a slope
2. Bituminous primer NEXLER BITFLEX Primer
3. Vapour barrier NEXLER Alu S40
4. Mineral wool
5. Underlayer bituminous felt NEXLER PREMIUM PYE PV200 S30 FF
6. Top layer bituminous felt **NEXLER PREMIUM PYE PV200 S40H**
7. Telescopic connector