

NEXLER Renovation

Weldable ventilation top bituminous felt

TECHNICAL DATA

Type of reinforcement	non-woven polyester
Top finishing	coarse grained
Low temperature flexibility	$\leq -20^{\circ}\text{C}$
Width	$\geq 0,99 \text{ m}$
Straightforwardness	$\leq 10 \text{ mm per } 5 \text{ m roll length}$
Thickness	$(5,3 \pm 0,2) \text{ mm}$
Resistance to external fire exposure* *applies to the examined layer systems	$B_{\text{root}}(t_1)$
Reaction to fire	class E
Watertightness: waterproof at a pressure	$\geq 10 \text{ kPa (method A)}$
Maximum tensile force: - longitudinal extension - transversal extension	$1100 \pm 200 \text{ N/50 mm (50 } \pm 15) \%$ $900 \pm 200 \text{ N/50 mm (50 } \pm 15) \%$
Resistance to root penetration	NPD
Resistance to static loading	$\geq 20 \text{ kg (method A)}$
Resistance to impact	$\geq 1000 \text{ mm (method A)}$
Resistance of the joint: - shear strength • longitudinal joint • transversal joint - tear off strength • longitudinal joint • transversal joint	$900 \pm 200 \text{ N/50 mm}$ $1100 \pm 200 \text{ N/50 mm}$ $250 \pm 50 \text{ N/50 mm}$ $200 \pm 50 \text{ N/50 mm}$
Durability: flow resistance at elevated temperature	$(100 \pm 10)^{\circ}\text{C}$
Dimensional stability	$\leq 1\%$
Reference document(s)	EN 13707:2004+A2:2009

PROPERTIES

- With a system of small channels to ventilate damp roofs
- Double SBS modification
- Durable and puncture-resistant
- For use in reduced ambient temperatures



14-YEARS SYSTEM WARRANTY



2xSBS



HIGH DURABILITY



RESISTANT TO PUNCTURE

APPLICATION

- Single-layer renovation of old, damp roof coverings



FOR DAMP ROOFS



WELDING



RENOVATION OF BITUMEN COVERINGS

PACKAGING

Poland

- Roll length: 5 m
- Quantity per pallet:
24 rolls (120 m²)

Export

- Roll length: 5 m
- Quantity per pallet:
24 rolls (120 m²)

METHOD OF USE

▪ CONDITIONS OF USE

Making an insulation using **NEXLER Renovation** bituminous felt should be carried out according to the technical design, in accordance with the current building regulations and the detailed guidelines for the design and execution of insulation contained in NEXLER Insulation Systems and the Technical Data Sheet.

The bituminous felt should be installed in ambient temperatures of above 0°C, this requirement applies to the time of day and night.

Do not carry out insulation work during strong winds and precipitation.

▪ SUBSTRATE PREPARATION

The substrate should meet the following requirements:

- dry substrate (no visible traces of moisture or darkening caused by moisture),
- clean substrate (the surface is free of dust, oil stains, grease and other contaminants),
- smooth substrate (local unevenness and cavities in the surface of concrete do not exceed ± 5 mm),
- even substrate (the gaps between the surface of the substrate and a 4 m long patch do not exceed 10 mm),
- roof slope inclination min. 1%.

Before welding **NEXLER Renovation** bituminous felt it is recommended to prime old bitumen layers or concrete substrate with water-based bitumen products for example NEXLER BITFLEX Primer, or solvent-based bitumen primers for example NEXLER Penetrator G7.

▪ PRODUCT CONTROL

The product should not raise any objections. The roll should be evenly rolled, without kinks.

▪ PRODUCT PREPARATION

If it is necessary to make the covering at low ambient temperatures, it is recommended to store the rolls in heated rooms at a temperature of not less than +18°C for 24 hours before installation.

▪ APPLICATION METHOD

NEXLER Renovation bituminous felt should be attached by welding to an old primed bituminous substrate. Application should be carried out after the priming agent has completely dried (or cured).

As a result of heating both the substrate and the underside of the bituminous felt with a burner, the thin protective plastic foil melts, the asphalt is slightly melted and the bituminous felt sticks evenly to the substrate. Maintain a bituminous felt overlap min. 8 cm wide along the length of the felt strip and an overlap min. 15 cm wide at

the joint perpendicular to the length of the felt strip. An asphalt outflow of approx. 0,5 - 1 cm in width over the entire length of the welded overlap is required, for both fastening methods.

NEXLER Renovation bituminous felt has special bitumen strips on the underside covered with PE foil. During welding, the bituminous felt is glued to the substrate by melted asphalt from strips. The gaps between the bitumen strips create small channels to ensure proper ventilation.

NEXLER Renovation bituminous felt is designed for installation on horizontal roof surfaces, except for the edge zones of roofs, i.e. over-gutter strips, roof ridge and side edges. The use of **NEXLER Renovation** bituminous felt on any vertical elements is not recommended. For edge zones and vertical elements, use weldable bituminous felt with the same grit as **NEXLER Renovation** but without a specially formed underside, e.g. NEXLER PREMIUM PYE PV200 S40H.

Zones that require a different type of bituminous felt should be 0,7 - 1,0 m wide (for over-gutter strips, roof ridge and side edges) or 0,5 - 0,7 m wide (for vertical elements on the roof such as chimney, attic). All vertical elements that require processing should be sealed with a bituminous felt, e.g. NEXLER PREMIUM PYE PV200 S40H without using **NEXLER Renovation** bituminous felt. Thanks to this, the underside of the bituminous felt is precisely bonded to the renovated substrate. In the case of **NEXLER Renovation** bituminous felt, such a bonding is difficult, but can be achieved by heating the underside of the felt for a longer period of time. Please note however that heating creates a risk of wrinkles on the top side of the **NEXLER Renovation** bituminous felt as a result of overheating. For this reason, we recommend using other highly modified polyester fleece-backed roofing felts in edge zones and on processed elements.

Vertical elements that require the use of a felt other than **NEXLER Renovation** are: vertical sections of attics and firewalls, skylight bases, walls of higher buildings adjacent to the renovated roof, ventilation stacks, supports for mounting ventilation and air conditioning equipment, other vertical elements.

Depending on the degree of roof dampness, use ventilation chimneys - 1 per 50 - 100 m², then weld a top layer bituminous felt with suitable properties.

▪ CONTROL OF PERFORMANCE

During acceptance, the following should be checked:

- correctness of welding of overlaps - a continuous trickle of melted asphalt mixture on the overlaps is required,
- adhesion of the bituminous felt to the substrate,
- correctness of detail work.

WARRANTY

The manufacturer NEXLER sp. z o.o. provides the direct purchaser of **NEXLER Renovation** bituminous felt:

- a system warranty for 14 years, if NEXLER Sp. z o.o. primers are used to prime the substrate,
- a standard material warranty for 10 years.

Details of the guarantee provided to the purchaser are contained in the guarantee card.

TOOLS AND TOOL CLEANING

Roofing gas burner, bituminous felt uncoiler.

STORAGE AND TRANSPORT

The rolls of **NEXLER Renovation** bituminous felt are protected with packing tapes before unrolling. Each roll has a label with the required data on it. The rolls are placed vertically on wooden industrial pallets and foiled.

During transportation and storage, the rolls must be protected from moisture and exposure to sunlight, and be placed upright in one layer in a way preventing any dislocation or damage.

The bituminous felt rolls must be stored on a flat surface at a distance of at least 120 cm from radiators.

Transportation must be carried out in compliance with applicable shipment safety regulations.

NOTES

Works should be carried out in accordance with technical conditions, manufacturer's instructions, health and safety standards and regulations.

Before welding the bituminous felt, take notice of whether the next roll to be rolled out does not differ in the shade of the sprinkle. The sprinkle is a natural raw material and may vary in shade.

IMPORTANT INFORMATION

Please refer to the detailed conditions of use of the product before use.

We guarantee the quality of our materials as part of our terms of sale and delivery.

For buildings with special requirements that are not covered by this manual, we provide our Customers with our own professional advisory service.

The manufacturer has no influence on the improper use of the material, its use for other purposes or under conditions other than those described above. The guarantee only covers the quality of the delivered product. The correct and therefore effective use of the product is not subject to our control.

Neither the manufacturer nor his authorized representative may be held liable for any loss incurred as a result of improper use or storage of the product.

Employees of the company are authorized to provide technical information only and solely in accordance with this Technical Data Sheet. Information other than that contained in this sheet should be confirmed in writing.

If you have any doubts, consult the manufacturer.

CONTACT DETAILS

NEXLER sp. z o.o.

Łużycka 6, 81-537 Gdynia, Poland

tel.: +48 58 712 94 44

www.nexler.com

e-mail: dt@nexler.com

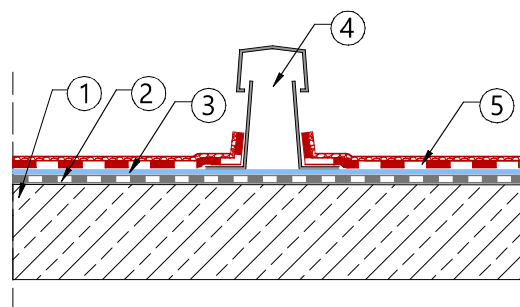
ISSUE DATE

This Technical Data Sheet was issued on 19.03.2025.

Once we have issued a new Technical Data Sheet, this one is no longer valid.

DETAILS

Covering on a substrate made of old damp bituminous layers



1. Concrete substrate constructed with a slope
2. Old layers of bituminous felt
3. Bituminous primer NEXLER BITFLEX Primer
4. Ventilation chimney
5. Ventilation top bituminous felt **NEXLER Renovation**